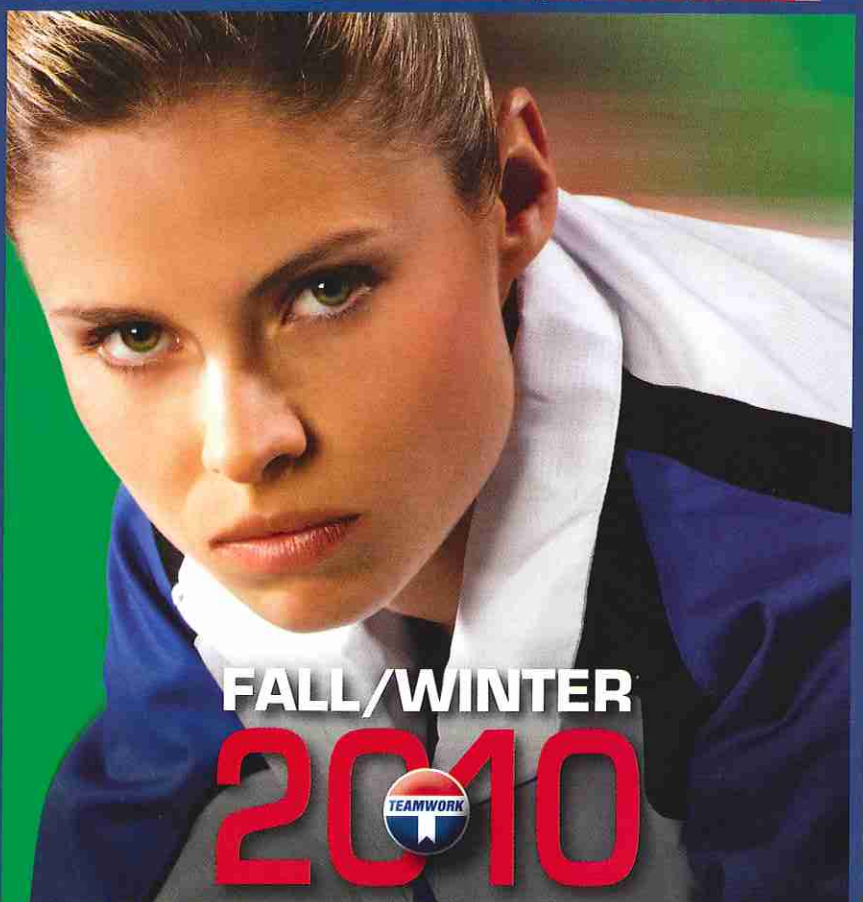
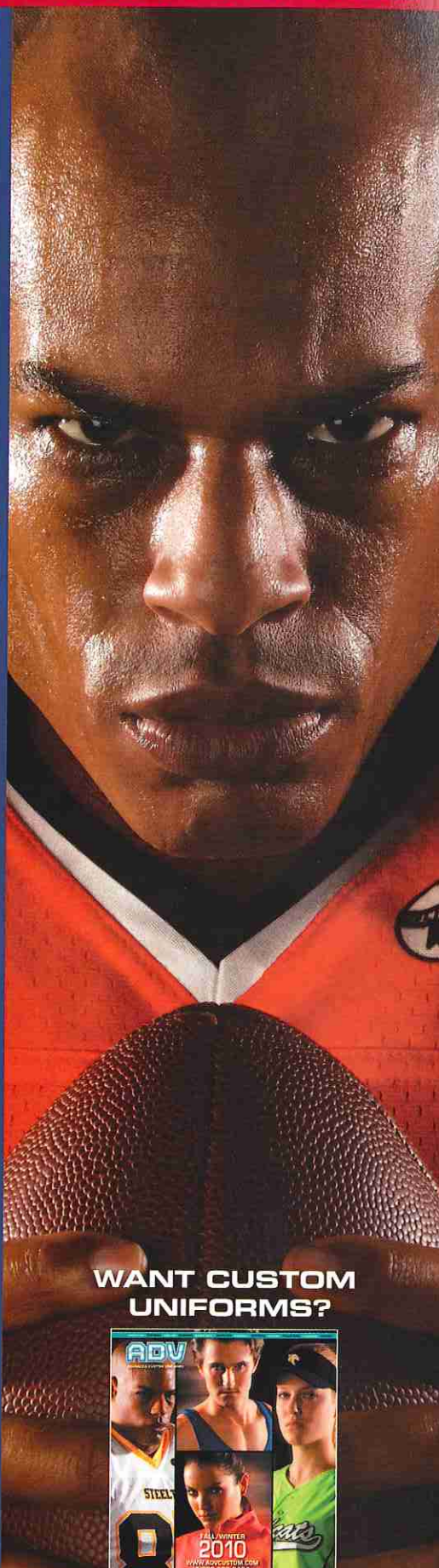
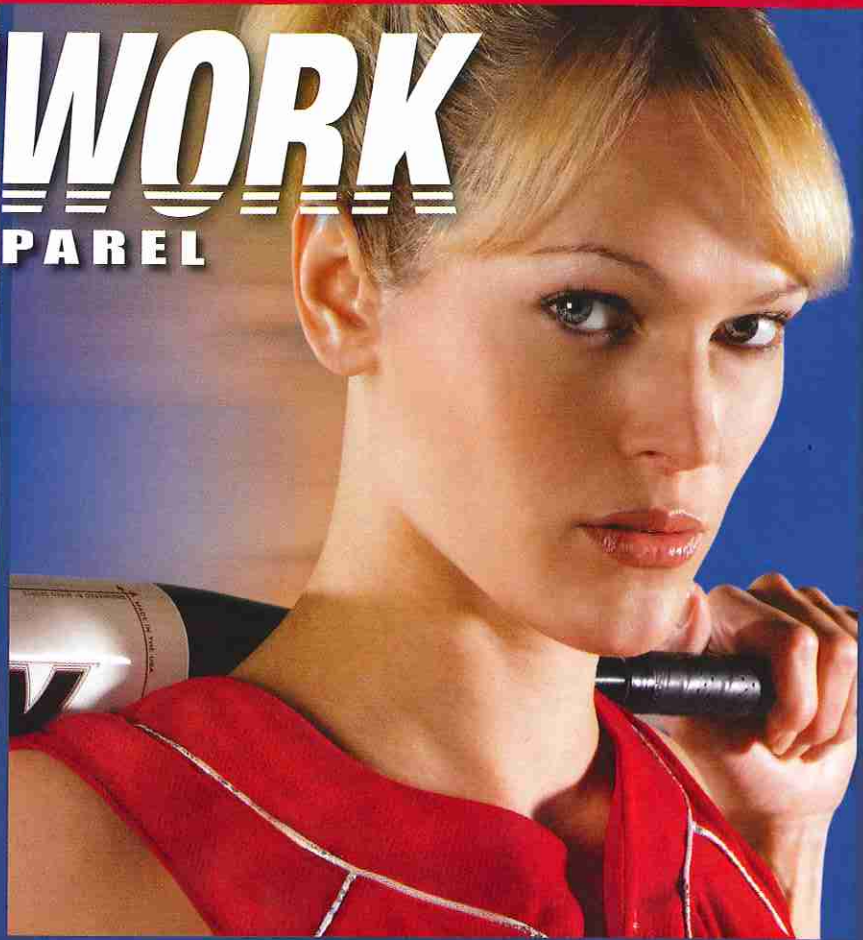
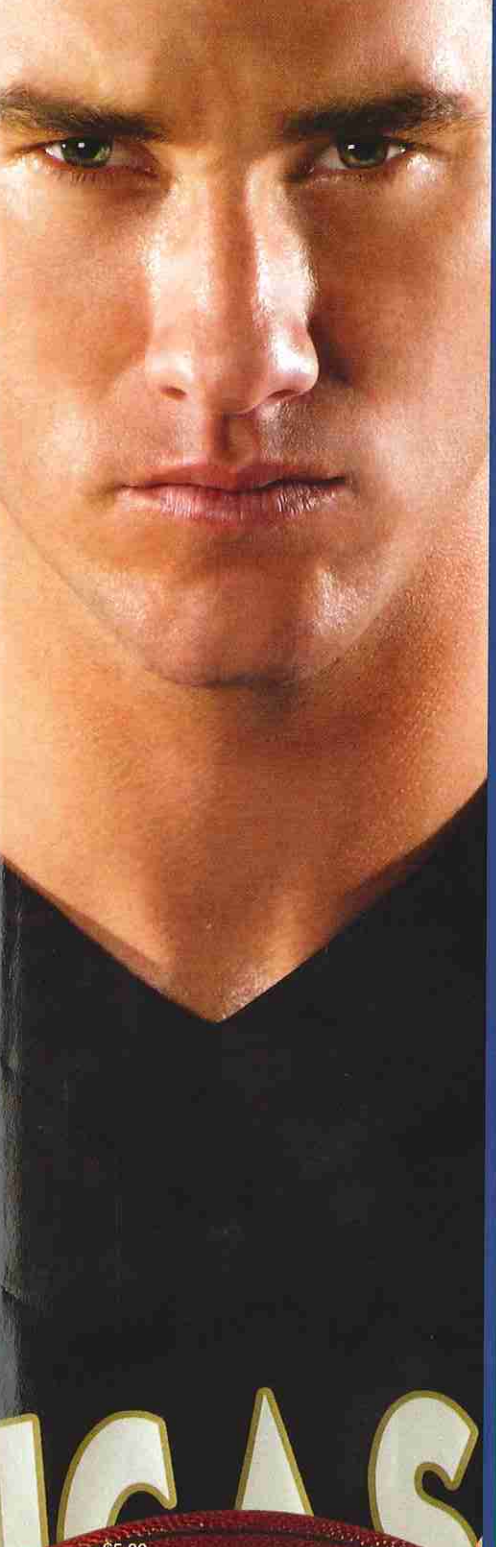
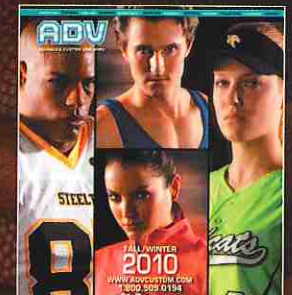


TEAMWORK

ATHLETIC APPAREL



WANT CUSTOM UNIFORMS?



FALL/WINTER
2010



WWW.TEAMWORKATHLETICS.COM

\$5.00

JERSEYS & SHORTS

See page 121
for measurement
instructions.

GIRLS' JERSEY

S/M 30-32
L/XL 32-34

YOUTH JERSEY

XS 22-24
S 26-28
M 30-32
L 34-36

WOMEN'S JERSEY (W01)

2XS 0-32
XS 32-34
S 34-36
M 36-38
L 38-40
XL 40-42
2XL 42-44
3XL 44-46
4XL 46-48

WOMEN'S JERSEY (W90)

XS 32-34
S 34-36
M 36-38
L 38-41
XL 41-43
2XL 43-46
3XL 46-49
4XL 49-52

ADULT JERSEY

S 34-36
M 38-40
L 42-44
XL 46-48
2XL 50-52
3XL 54-56
4X 58-60
5XL 62-64
G 58-60

WOMEN'S SHORT

2XS 22-24
XS 24-26
S 26-28
M 28-30
L 30-33
XL 33-36
2XL 36-39
3XL 39-42
4XL 42-45



NEW
FOR
2010

AVAILABLE
JUN '10

COBRA MOISTURE MANAGEMENT V-NECK JERSEY

1969 GIRLS | LIST \$14.90

1949 WOMEN | LIST \$15.90

STYLE

- Moisture Management V-Neck Jersey

FABRIC

- Moisture Wicking Polyester w/Cool Mesh Side Panels

FEATURES

- Streamlined women's cut
- Two moisture wicking fabrics allow for maximum performance
- Home and away color combos
- V-Neck design

SIZES

- Girls S/M-L/XL, Women S-2XL, Add(2XL-\$5)

Use size scale Women's Jersey (W90)



15 RDY/WHT

25 SCR/WHT

45 BLK/WHT

51 WHT/RDY

52 WHT/SCR

54 WHT/BLK

57 WHT/NAVY

75 NAVY/WHT

265 DGN/WHT

526 WHT/DGN

MICROPOLY SPANDEX SHORT BOTH LOW RISE AND STANDARD CUTS AVAILABLE

LOW-RISE

4943 WOMEN | LIST \$17.90

STANDARD

4942 WOMEN | LIST \$17.90

STYLE

- Low-Rise & Standard Cut Volleyball Short

FABRIC

- 82% Polyester / 18% Spandex

FEATURES

- Spandex blend for secure fit & support
- No annoying center seams in front or back
- New pro-style gusset & flatseam construction for unparalleled comfort
- Moisture management micropoly keeps players cooler and drier
- Inseam from 4.5" to 5.5"

SIZES

- Women's XS-XL



1 RDY

2 SCR

4 BLK

7 NAVY

1949

4942

VOLLEYBALL





ARCHER JERSEY

1264 YOUTH | LIST \$24.90

1244 ADULT | LIST \$26.90

STYLE

- Cool Mesh Jersey with Side Panels

FABRIC

- Moisture Wicking Cool Mesh Polyester

SIZES

- Youth S-L, Adult S-3XL, Add (2XL-\$5, 3XL-\$10)

Use size scale Women's Jersey (W01)



SPUR JERSEY

1266 YOUTH | LIST \$24.90

1246 ADULT | LIST \$26.90

STYLE

- Jersey with Cool Mesh Sides and Back

FABRIC

- Dazzle Cloth Front and Inserts with Moisture Wicking Cool Mesh Polyester Sides and Back

SIZES

- Youth S-L, Adult S-3XL, Add (2XL-\$5, 3XL-\$10)

Use size scale Women's Jersey (W01)



FEATURES

- Unique wraparound body insert
- Reinforced construction
- Moisture control mesh fabric
- Coordinated two-color neck trim

TSUNAMI JERSEY

1914 YOUTH | LIST \$23.90

1944 ADULT | LIST \$25.90

STYLE

- Jersey with Wraparound Body Insert

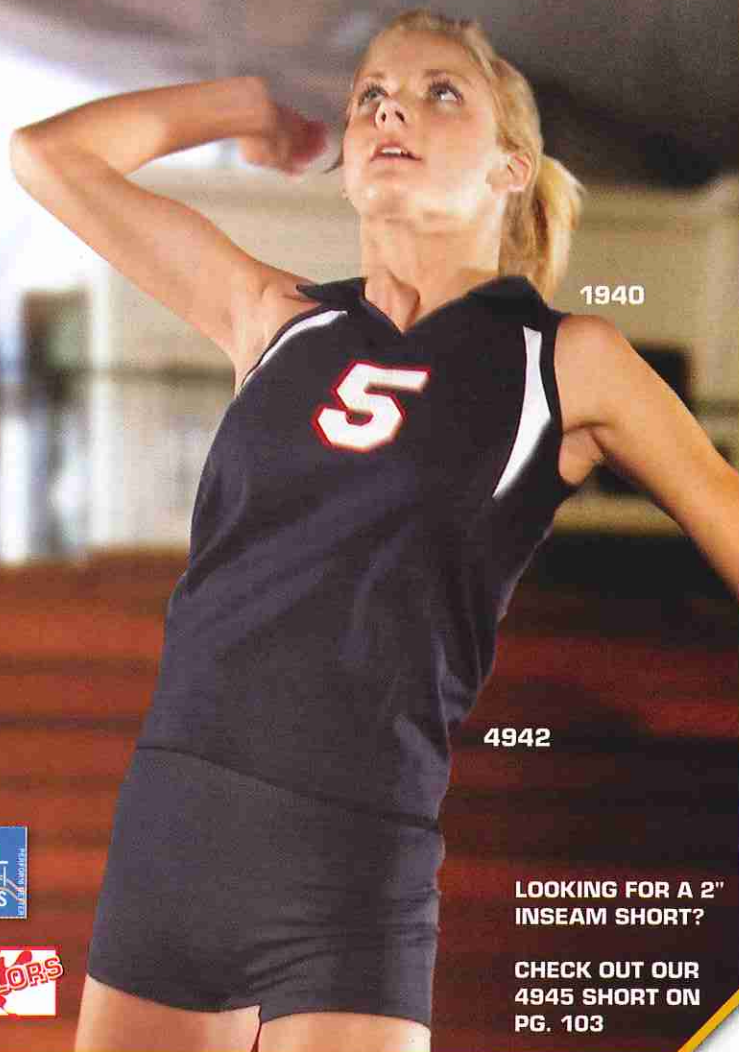
FABRIC

- Moisture Wicking Cool Mesh Polyester

SIZES

- Youth S-L, Adult S-3XL, Add (2XL-\$5, 3XL-\$10)

Use size scale Women's Jersey (W01)



1940

4942

LOOKING FOR A 2" INSEAM SHORT?

CHECK OUT OUR 4945 SHORT ON PG. 103



HEATER COLLARED JERSEY

1960 GIRLS | LIST \$14.90

1940 WOMEN | LIST \$15.90

STYLE

- Collared Volleyball Jersey

FABRIC

- Moisture Wicking Cool Mesh Polyester

FEATURES

- Modeled after a popular volleyball cut
- Moisture management micropoly keeps players cooler and drier
- Great looking contrast inserts
- Coordinated collar
- Reinforced construction

SIZES

- Girls' S/M-L/XL, Women's S-2XL, Add (2XL-\$5)

Use size scale Women's Jersey (W01)



MICROPOLY SPANDEX SHORT BOTH LOW RISE AND STANDARD CUTS AVAILABLE

LOW-RISE

4943 WOMEN | LIST \$17.90

STANDARD

4942 WOMEN | LIST \$17.90

STYLE

- Low-Rise & Standard Cut Volleyball Short

FABRIC

- 82% Polyester / 18% Spandex

FEATURES

- Spandex blend for secure fit & support
- No annoying center seams in front or back
- New pro-style gusset & flatseam construction for unparalleled comfort
- Moisture management micropoly keeps players cooler and drier
- Inseam from 4.5" to 5.5"

SIZES

- Women's XS-XL



JERSEYS & SHORTS

See page 121 for measurement instructions.

YOUTH JERSEY

| | |
|----|-------|
| XS | 22-24 |
| S | 26-28 |
| M | 30-32 |
| L | 34-36 |

WOMEN'S JERSEY

| | |
|-----|-------|
| 2XS | 30-32 |
| XS | 32-34 |
| S | 34-36 |
| M | 36-38 |
| L | 38-40 |
| XL | 40-42 |
| 2XL | 42-44 |
| 3XL | 44-46 |
| 4XL | 46-48 |

ADULT JERSEY

| | |
|-----|-------|
| S | 34-36 |
| M | 38-40 |
| L | 42-44 |
| XL | 46-48 |
| 2XL | 50-52 |
| 3XL | 54-56 |
| 4XL | 58-60 |
| 5XL | 62-64 |
| G | 58-60 |

GIRLS' SHORT

| | |
|-----|-------|
| 2XS | 16-18 |
| XS | 18-20 |
| S | 20-22 |
| M | 22-24 |
| L | 24-26 |

WOMEN'S SHORT

| | |
|-----|-------|
| 2XS | 22-24 |
| XS | 24-26 |
| S | 26-28 |
| M | 28-30 |
| L | 30-33 |
| XL | 33-36 |
| 2XL | 36-39 |
| 3XL | 39-42 |
| 4XL | 42-45 |

COTTON / SPANDEX SHORT

4941 WOMEN | LIST \$17.90

STYLE

- Volleyball Short

FABRIC

- 43% Polyester / 43% Cotton / 14% Spandex

FEATURES

- Spandex for secure fit & support
- Reinforced construction
- Inseam ranges from 3" to 4"
- Elastic waist
- Cotton blend for comfort

SIZES

- Women's XS-XL



1 ROY 2 SCR 4 BLK 7 NAVY

1 ROY

2 SCR

4 BLK

7 NAVY

1 ROY

2 SCR

4 BLK

7 NAVY

COTTON / SPANDEX SHORT

4941 WOMEN | LIST \$17.90

STYLE

- Volleyball Short

FABRIC

- 43% Polyester / 43% Cotton / 14% Spandex

FEATURES

- Spandex for secure fit & support
- Reinforced construction
- Inseam ranges from 3" to 4"
- Elastic waist
- Cotton blend for comfort

SIZES

- Women's XS-XL



1 ROY 2 SCR 4 BLK 7 NAVY

1 ROY

2 SCR

4 BLK

7 NAVY

1 ROY

2 SCR

4 BLK

7 NAVY

COTTON / SPANDEX SHORT

4941 WOMEN | LIST \$17.90

STYLE

- Volleyball Short

FABRIC

- 43% Polyester / 43% Cotton / 14% Spandex

FEATURES

- Spandex for secure fit & support
- Reinforced construction
- Inseam ranges from 3" to 4"
- Elastic waist
- Cotton blend for comfort

SIZES

- Women's XS-XL



1 ROY 2 SCR 4 BLK 7 NAVY

1 ROY

2 SCR

4 BLK

7 NAVY

1 ROY

2 SCR

4 BLK

7 NAVY

COTTON / SPANDEX SHORT

4941 WOMEN | LIST \$17.90

STYLE

- Volleyball Short

FABRIC

- 43% Polyester / 43% Cotton / 14% Spandex

FEATURES

- Spandex for secure fit & support
- Reinforced construction
- Inseam ranges from 3" to 4"
- Elastic waist
- Cotton blend for comfort

SIZES

- Women's XS-XL



1 ROY 2 SCR 4 BLK 7 NAVY

1 ROY

2 SCR

4 BLK

7 NAVY

1 ROY

2 SCR

4 BLK

7 NAVY

COTTON / SPANDEX SHORT

4941 WOMEN | LIST \$17.90

STYLE

- Volleyball Short

FABRIC

- 43% Polyester / 43% Cotton / 14% Spandex

FEATURES

- Spandex for secure fit & support
- Reinforced construction
- Inseam ranges from 3" to 4"
- Elastic waist
- Cotton blend for comfort

SIZES

- Women's XS-XL



1 ROY 2 SCR 4 BLK 7 NAVY

1 ROY

2 SCR

4 BLK

7 NAVY

1 ROY

2 SCR

4 BLK

7 NAVY

COTTON / SPANDEX SHORT

4941 WOMEN | LIST \$17.90

STYLE

- Volleyball Short

FABRIC

- 43% Polyester / 43% Cotton / 14% Spandex

FEATURES

- Spandex for secure fit & support
- Reinforced construction
- Inseam ranges from 3" to 4"
- Elastic waist
- Cotton blend for comfort

SIZES

- Women's XS-XL



1 ROY 2 SCR 4 BLK 7 NAVY

1 ROY

2 SCR

4 BLK

7 NAVY

1 ROY

2 SCR

4 BLK

7 NAVY

COTTON / SPANDEX SHORT

4941 WOMEN | LIST \$17.90

STYLE

- Volleyball Short

FABRIC

- 43% Polyester / 43% Cotton / 14% Spandex

FEATURES

- Spandex for secure fit & support
- Reinforced construction
- Inseam ranges from 3" to 4"
- Elastic waist
- Cotton blend for comfort

SIZES

- Women's XS-XL



1 ROY 2 SCR 4 BLK 7 NAVY

1 ROY

2 SCR

4 BLK

7 NAVY

1 ROY

2 SCR

4 BLK

7 NAVY

COTTON / SPANDEX SHORT

4941 WOMEN | LIST \$17.90

STYLE

- Volleyball Short

FABRIC

- 43% Polyester / 43% Cotton / 14% Spandex

FEATURES

- Spandex for secure fit & support
- Reinforced construction
- Inseam ranges from 3" to 4"
- Elastic waist
- Cotton blend for comfort

SIZES

- Women's XS-XL



1 ROY 2 SCR 4 BLK 7 NAVY

1 ROY

2 SCR

4 BLK

7 NAVY

1 ROY

2 SCR

4 BLK

7 NAVY

COTTON / SPANDEX SHORT

4941 WOMEN | LIST \$17.90

STYLE

- Volleyball Short

FABRIC

- 43% Polyester / 43% Cotton / 14% Spandex

FEATURES

- Spandex for secure fit & support
- Reinforced construction
- Inseam ranges from 3" to 4"
- Elastic waist
- Cotton blend for comfort

SIZES

- Women's XS-XL



1 ROY 2 SCR 4 BLK 7 NAVY

1 ROY

2 SCR

4 BLK

7 NAVY

1 ROY

2 SCR

4 BLK

7 NAVY

COTTON / SPANDEX SHORT

4941 WOMEN | LIST \$17.90

STYLE

- Volleyball Short

FABRIC

- 43% Polyester / 43% Cotton / 14% Spandex

FEATURES

- Spandex for secure fit & support
- Reinforced construction
- Inseam ranges from 3" to 4"
- Elastic waist
- Cotton blend for comfort

SIZES

- Women's XS-XL



1 ROY 2 SCR 4 BLK 7 NAVY

1 ROY

2 SCR

4 BLK

7 NAVY

1 ROY

2 SCR

4 BLK

7 NAVY

COTTON / SPANDEX SHORT

4941 WOMEN | LIST \$17.90

STYLE

- Volleyball Short

FABRIC

- 43% Polyester / 43% Cotton / 14% Spandex

FEATURES

- Spandex for secure fit & support
- Reinforced construction
- Inseam ranges from 3" to 4"
- Elastic waist
- Cotton blend for comfort

SIZES

- Women's XS-XL



1 ROY 2 SCR 4 BLK 7 NAVY

1 ROY

2 SCR

4 BLK

7 NAVY

1 ROY

2 SCR

4 BLK

7 NAVY

COTTON / SPANDEX SHORT

4941 WOMEN | LIST \$17.90

PHANTOM JERSEY



1945 WOMEN | LIST \$27.90

STYLE

- MicroPoly Volleyball Jersey

FABRIC

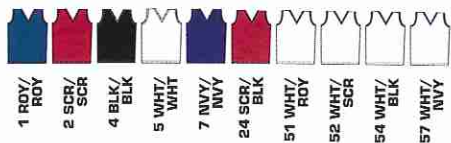
- 85% Polyester / 15% Lycra

SIZES

- Women's S-2XL, Add (2XL-\$5)

FEATURES

- Contrasting bias on neck and armhole
- Specially tailored for a great women's fit
- Solid colored back
- Moisture control micropoly keeps you cool and dry



2" INSEAM SPANDEX STRETCH SHORT

STANDARD AND LOW RISE VERSIONS AVAILABLE

4944 WOMEN | LIST \$17.90 STANDARD

4945 WOMEN | LIST \$17.90 LOW RISE

STYLE

- Standard and Low Rise Volleyball Shorts

FABRIC

- 90% Polyester / 10% Spandex

SIZES

- Women's XS-XL

FEATURES

- Durable waistband with elastic
- Flat panel construction
- Popular 2" inseam length
- Reinforced construction
- Moisture Control Band



VOLLEYBALL



NEW COACHES' SHIRTS



NEW FOR 2010



PLAYMAKER COACHES' SHIRT

2051 ADULT | LIST \$27.90

STYLE

- Quick Dri Coaches' Shirt

FABRIC

- Moisture Management Quick Dri Polyester

FEATURES

- Contemporary look and comfortable feel
- Three-button placket
- Ribbed collar
- Generous cut for comfortable fit
- Great for sideline wear or promotional use

SIZES

- Adult S-3XL, Add (2XL-\$5, 3XL-\$10)



NEW FOR 2010



POWER COACHES' SHIRT

2052 ADULT | LIST \$27.90

STYLE

- Quick Dri Coaches' Shirt

FABRIC

- Moisture Management Quick Dri Polyester

FEATURES

- Contemporary look and comfortable feel
- Three-button placket
- Self collar
- Generous cut for comfortable fit
- Great for sideline wear or promotional use

SIZES

- Adult S-3XL, Add (2XL-\$5, 3XL-\$10)



ADV Volleyball

Create your own look

Design in virtually any color

New Styles & Designs

3 Performance Fabrics



To learn more about

ADV Volleyball, turn

to the **ADV Design Guide**

found after page 122.

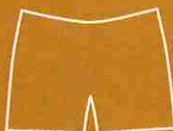
1 Go to advcustom.com and choose your CUT and FABRIC



CAP-SLEEVE JERSEY



COLLARED JERSEY



4" SHORT



Base

FLEX KNIT POLYESTER

This subtle, flexible polyester provides a great feel and exceptional comfort while you play.

(Short is Stretch Spandex)



Premium

COOL MESH POLYESTER

Moisture-wicking polyester & soft polyester yarn combine for superior comfort & performance. (+\$8 per item)



Premium

STRETCH POLY-SPANDEX

For the ultimate in fit and comfort, nothing beats spandex. This fabric will keep you cooler, dryer, and looking great! (+\$8 per item)

2 Choose your DESIGN



ACE



SPIKE



FLARE



CROSS COURT



ATTACK



QUICK SET



JUMP SERVE

Visit our website to view more design options

3 Choose your COLORS

Choose primary, secondary & accent colors



NEW Fluorescent colors

FLUORESCENT YELLOW
FLUORESCENT GREEN

Also available (no extra fee)

...OR ADD CUSTOM COLORS FOR FREE!

4 Decorate with NAMES, LOGOS and NUMBERS



SMITH SMITH SMITH SMITH

23 23 23 23 23 23

5 SUBMIT your design. You're done!

Submit your design to an authorized Teamwork Athletic dealer to complete the order process.

BUILD YOUR OWN

ACE

Shown in Cap-Sleeve Jersey - also available in Collared Jersey

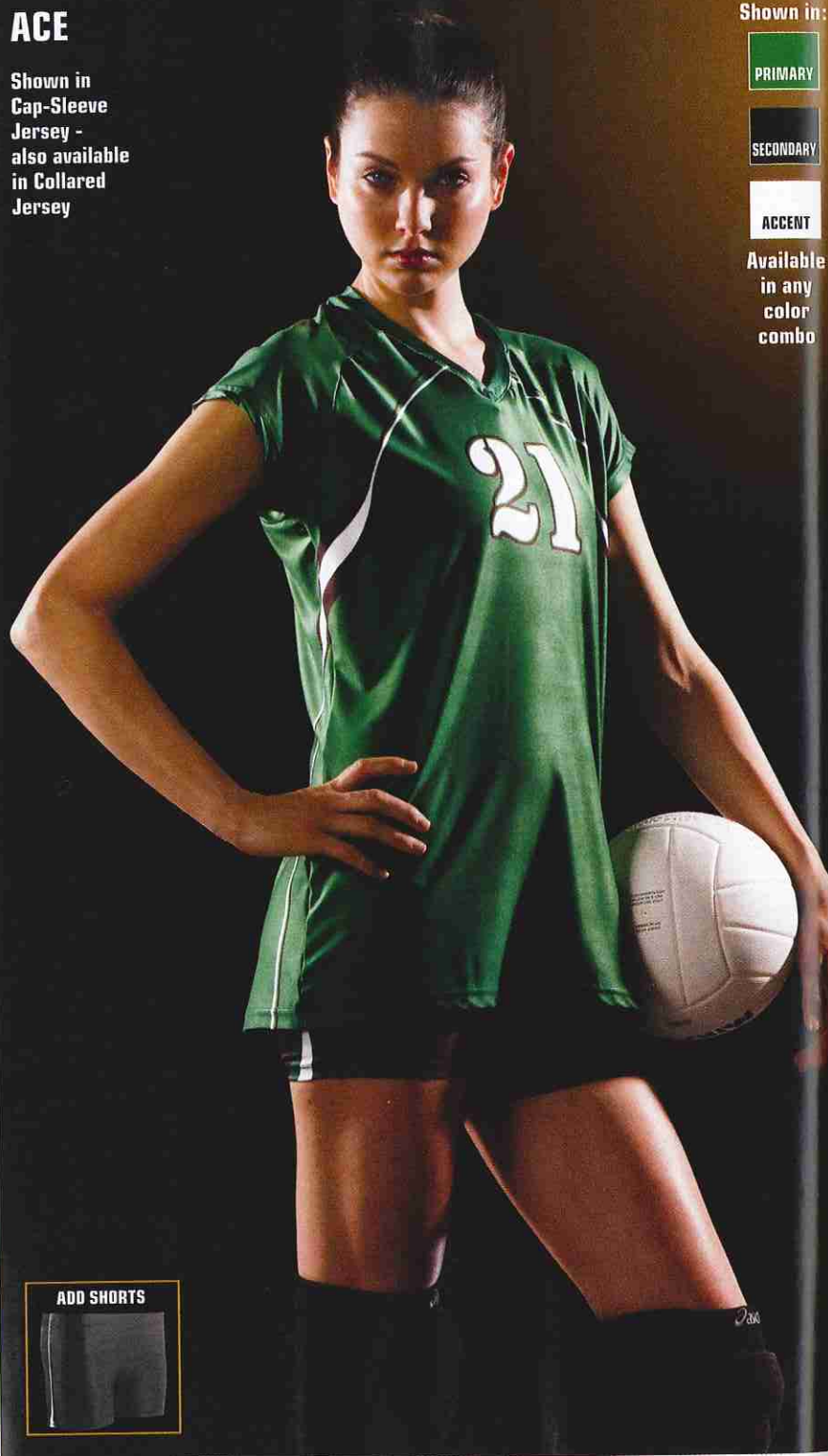
Shown in:

PRIMARY

SECONDARY

ACCENT

Available in any color combo



ADD SHORTS



GIRLS' JERSEY:
XS(26-28), S(28-30), M(30-32), L(32-34)

GIRLS' SHORT:
XS(18-20), S(20-22), M(22-24), L(24-26)

WOMEN'S JERSEY:
S(34-36), M(36-38), L(38-40), XL(40-42), 2XL(42-44);
Add 2XL-\$4

WOMEN'S SHORT:
S(26-28), M(28-30), L(30-33), XL(33-36), 2XL(36-39);
Add 2XL-\$4

Suggested Retail Prices:

Girls' Jersey \$46.90
Girls' Short \$26.90
Women's Jersey \$61.90
Women's Short \$41.90

Final ADV pricing is set by your dealer. Please ask them how ADV can fit into your team's budget.

SPIKE

Shown in:

- PRIMARY
- SECONDARY
- ACCENT

Available in any color combo

ADD SHORTS

FLARE

Shown in:

- PRIMARY
- SECONDARY
- ACCENT

Available in any color combo

ADD SHORTS

CROSS COURT

Shown in:

- PRIMARY
- SECONDARY
- ACCENT

Available in any color combo

ADD SHORTS

All designs shown in Cap-Sleeve jersey. Collared Jersey also available.

ATTACK

Shown in:

- PRIMARY
- SECONDARY
- ACCENT

Available in any color combo

ADD SHORTS

QUICK SET

Shown in:

- PRIMARY
- SECONDARY
- ACCENT

Available in any color combo

ADD SHORTS

JUMP SERVE

Shown in:

- PRIMARY
- SECONDARY
- ACCENT

Available in any color combo

ADD SHORTS