



R
RUSSELL



6

VOLLEYBALL

SUBLIMATED VOLLEYBALL



WING
PAGE 86



VOLLEY
PAGE 86



PINNACLE
PAGE 87



CAPTAIN
PAGE 88



CUT SHOT
PAGE 89



TRIPLE BLOCK
PAGE 90



SPIKE TOWN
PAGE 91



SPIKE
PAGE 92



SERVE
PAGE 93



SHATTERED
PAGE 94



DIVE
PAGE 95



WAVE
PAGE 96



PINNACLE
PAGE 97



CAPTAIN
PAGE 98



CUT SHOT
PAGE 99



TRIPLE BLOCK
PAGE 100



BASE
PAGE 101



WING

Jersey: 1V472SU

STEPS:

- Step 1 - Body Design / Tonal (Aqua)
- Step 2 - Shaped Neck (Stealth)
- Step 3 - Sleeve Design / Tonal (Aqua)
- Step 4 - Piping (White)

Shown with 2V972XT Tight



VOLLEY

Jersey: 1V472SU

STEPS:

- Step 1 - Body (Royal)
- Step 2 - Shaped Neck / Sleeve Insert (White)
- Step 3 - Sleeve (Gold)
- Step 4 - Front & Back Curved Line Design (Gold)
- Step 5 - Piping (Royal)

Shown with 2V372XK Tight



PINNACLE

Jersey: 1V472SU

- STEPS:
- Step 1 - Body (GT Gold)
 - Step 2 - Shaped Neck (Navy)
 - Step 3 - Sleeve - Pattern
 - a) Pattern Color 1 (Hive)
 - b) Pattern Color 2 (GT Gold)
 - c) Pattern Color 3 (N/A)
 - Step 4 - Piping (White)

Shown with 2V372XK Tight





CAPTAIN

Jersey: 1V272SU / 1V2VHSU / 1V2DPSU

STEPS:

- Step 1 - Body (Black)
- Step 2 - Shoulder Stripe (True Red)
- Step 3 - Side Stripe (True Red)
- Step 4 - Neck / Sleeves (Black)
- Step 5 - Neck Insert / Cap Ends (True Red)

Shown with 2V372XT Tight





CUT SHOT

Jersey: 1V172SU / 1V1VHSU / 1V1DPSU

STEPS:

- Step 1 - Body (Dark Green)
- Step 2 - Inserts (White)
- Step 3 - Piping (Black)
- Step 4 - Neck / Sleeves (Black)
- Step 5 - Neck Inserts / Cap Sleeve Ends (White)

Shown with 2V372XT Tight





TRIPLE BLOCK

Jersey: 1V172SU / 1V1VHSU / 1V1DPSU

STEPS:

- Step 1 - Body (Maroon)
- Step 2 - Armhole Inserts (Black)
- Step 3 - Sleeve (White)
- Step 4 - Neck / Piping (White)
- Step 5 - Neck Insert / Cap Sleeve Ends (Black)

Shown with 2V372XK Tight



SPIKE TOWN

Jersey: 1V172SU / 1V1VHSU / 1V1DPSU

- STEPS:
- Step 1 - Body (Stealth)
 - Step 2 - Side Insert / Piping (True Red)
 - Step 3 - Angle / Dots (White)
 - Step 4 - Neck / Sleeve (Black)
 - Step 5 - Neck Insert / Cap Sleeve Ends (True Red)

Shown with 2V372XK Tight





SPIKE

Jersey: 1V272SU / 1V2VHSU / 1V20PSU

STEPS:

- Step 1 - Body (Stealth)
- Step 2 - Body Design Color 1 (Electric Green)
- Step 3 - Body Design Color 2 (Navy)
- Step 4 - Sleeve **Show through color is always body color* (Electric Green)
- Step 5 - Neck Insert / Cap Sleeve End (Navy)
- Step 6 - Neck (Electric Green)

SPIKE

Tight: 3V972SU

STEPS:

- Step 1 - Body / Waistband **72 Cloth Colors Only* (Navy)
- Step 2 - Side Panel Design Color 1 (Stealth)
- Step 3 - Side Panel Design Color 2 (Electric Green)





SERVE

Jersey: 1V172SU / 1V1VHSU / 1V1DPSU

STEPS:

- Step 1 - Body (Black)
- Step 2 - Sleeve/Body insert - Pattern (Hold That Tiger)
 - Pattern Color 1 (Gold)
 - Pattern Color 2 (Black)
 - Pattern Color 3 (N/A)
- Step 3 - Neck Insert / Cap Sleeve End (Gold)
- Step 4 - Neck (Black)

PINNACLE

Tight: 3V972SU

STEPS:

- Step 1 - Body / Waistband *72 Cloth color only (Black)
- Step 2 - Side Panel Pattern (Hold That Tiger)
 - a) Pattern Color 1 (Gold)
 - b) Pattern Color 2 (Black)
 - c) Pattern Color 3 (N/A)





SHATTERED

Jersey: 1V172SU / 1V1VHSU / 1V1DPSU

STEPS:

- Step 1 - Body / Sleeve (True Red)
- Step 2 - Front / Back Upper Stripe & Shattered Gradient (White)
- Step 3 - Front / Back Lower Taper Stripe (Black)
- Step 4 - Neck Insert / Cap Sleeve Ends (Black)
- Step 5 - Neck (Black)

SHATTERED

Tight: 3V972SU

STEPS:

- Step 1 - Body / Waistband *72 Cloth Colors Only (True Red)
- Step 2 - Side Panel Shattered Gradient (White)





DIVE

Jersey: 1V172SU / 1V1VHSU / 1V1DPSU

- STEPS:
Step 1 - Body / Right Sleeve (Gold)
Step 2 - Dive Top / Left Sleeve (Maroon)
Step 3 - Dive Bottom (Black)
Step 4 - Neck Insert / Cap Sleeve End (Maroon)
Step 5 - Neck (Maroon)

DIVE

Tight: 3V972SU

- STEPS:
Step 1 - Body / Waistband *72 Cloth color only (Gold)
Step 2 - Side Panel (Gold)
Step 3 - Dive Top (Black)
Step 4 - Dive Bottom (Maroon)





WAVE

Jersey: 1V272SU / 1V2VHSU / 1V2DPSU

STEPS:

- Step 1 - Left Body / Sleeve Right Wave (Burnt Orange)
- Step 2 - Right Body / Sleeve (White)
- Step 3 - Left Wave (Dark Green)
- Step 4 - Neck Insert / Cap Sleeve End (Burnt Orange)
- Step 5 - Neck (Burnt Orange)

WAVE

Tight: 3V972SU

STEPS:

- Step 1 - Body / Waistband *72 Cloth Colors Only (Burnt Orange)
- Step 2 - Left Side Panel Wave (White)
- Step 3 - Right Side Panel Section / Left Wave (Dark Green)
- Step 4 - Right Wave (Burnt Orange)





PINNACLE

Jersey: 1V172SU / 1V1VHSU / 1V1DPSU

STEPS:

- Step 1 - Front Body - (GT Gold)
- Step 2 - Back Body - Pattern (Shockwave)
 - Pattern Color 1 (Navy)
 - Pattern Color 2 (White)
 - Pattern Color 3 (N/A)
- Step 3 - Sleeves (Navy)
- Step 4 - Neck / Neck Insert / Cap Sleeve Ends (Navy)

PINNACLE

Tight: 3V972SU

STEPS:

- Step 1 - Body / Waistband *72 Cloth color only (Navy)
- Step 2 - Side Panel Pattern (Shockwave)
 - a) Pattern Color 1 (Navy)
 - b) Pattern Color 2 (White)
 - c) Pattern Color 3 (N/A)





CAPTAIN

Jersey: 8S1S2GU

STEPS:

- Step 1 - Body (Royal)
- Step 2 - Shoulder Stripe (Burnt Orange)
- Step 3 - Side Stripe (White)
- Step 4 - Neck / Sleeve (Royal)

BASE

Short: 9S1S2GU

STEPS:

- Step 1 - Body Pattern (Solid)
- Pattern Color 1 - (Royal)
- Pattern Color 2 - (N/A)
- Pattern Color 3 - (N/A)





CUT SHOT

Jersey: 8S1S26U

STEPS:

Step 1 - Body (Dark Green)

Step 2 - Inserts (White)

Step 3 - Piping (Black)

Step 4 - Neck / Sleeve (Black)

POWER STRIPE 1

Short: 9S1S26U

STEPS:

Step 1 - Body (Dark Green)

Step 2 - Side Panel (Gold)

Step 3 - Thin Double Stripes (Dark Green)

Step 4 - Center Stripe (White)





TRIPLE BLOCK

Jersey: 8S1S2GU

STEPS:

- Step 1 - Body (True Red)
- Step 2 - Armhole Inserts (White)
- Step 3 - Sleeve / Piping (Navy)
- Step 4 - Neck (White)

PINNACLE

Short: 9S1S2GU

STEPS:

- Step 1 - Body (True Red)
- Step 2 - Side Panel (Solid)
- Pattern Color 1 - (White)
- Pattern Color 2 - (N/A)
- Pattern Color 3 - (N/A)





BASE

Jersey: 8S1S26U

STEPS:

Step 1 - Body - Pattern (Solid)

- a) Pattern Color 1 (Purple)
- b) Pattern Color 2 (N/A)
- c) Pattern Color 3 (N/A)

Step 2 - Sleeve / Neck - Pattern or Color (Shockwave)

- a) Pattern Color 1 (Purple)
- b) Pattern Color 2 (Purple Tonal)
- c) Pattern Color 3 (N/A)

PINNACLE

Short: 9S1S26U

STEPS:

Step 1 - Body (Purple)

Step 2 - Side Panel (Shockwave)

- Pattern Color 1 - (Purple)
- Pattern Color 2 - (Purple Tonal)
- Pattern Color 3 - (N/A)



VOLLEYBALL SUBLIMATION STYLE DETAILS

| | | | |
|---|---|--|--|
| JERSEYS **Refer to page 2 for fabric content and color options. | 1V472SU – Women’s Cap Sleeve Sublimated Jersey •Tight fit construction •Cap sleeve •72 Cloth front panel •VT Cloth drop tail back panel •Sublimated body design | 1V1__SU – Women’s Cap Sleeve Sublimated Jersey •Tight fit construction •Cap sleeve •VT back panel on 1V172SU •VH front and back panel on 1V1VHSU •DP front and back panel on 1V1DPSU | 1V2__SU – Women’s Long Sleeve Sublimated Jersey •Tight fit construction • Set in long sleeve •VT cloth back panel on 1V272SU •DP cloth front and back on 1V2DPSU •Sublimated body design |
| Decoration Placements | 1V472SU-6,7,9C(3 OR BN) | 1V1__SU-6,7,8V(logo only) 9C, (3 or BN) | 1V2__SU-6,7,8V(logo only) 9C, (3 or BN) 32, 35 |
| Decoration Type | Sublimation only | | |
| Decoration Pricing | Four locations included in the price \$5.00 charge for each additional decoration placement | | |
| TIGHTS **Refer to page 2 for fabric content and color options. | 3V972SU – Women’s Tight with Sublimated Side Panels •Low rise cut •1” flat covered elastic waistband •Back seam for comfort fit •Flatseams at panels •Sublimated side panels •Moisture management liner •3” finished inseam •“R Russell” logo on lower right leg | | |
| Body Options | ID TAGS \$4.00 Plus 1” inseam \$4.00 Plus 2” inseam \$4.00 Plus 3” inseam \$7.00 Plus 4” inseam \$7.00 | | |
| Decoration Placements | N/A | | |
| Decoration Type | N/A | | |

| | | | |
|-----------------------|--------------------------|---------------------------|----------------|
| Fabric Options | 72 | VH | DP |
| | 91% polyester 9% spandex | 72% polyester 28% spandex | 100% polyester |

| PRICING | | | | | |
|---------|--|---|---------|---------|---------|
| JERSEYS | Description | Sizes | 72 | VH | DP |
| 1V472SU | Women’s Cap Sleeve Sublimated Jersey | Sizes: XS-XXL | \$81.00 | N/A | N/A |
| 1V1__SU | Women’s Cap Sleeve Sublimated Jersey | Sizes: XS-XXL Oversize: 3XL 10% upcharge on 3XL | \$78.50 | \$68.00 | \$62.00 |
| 1V2__SU | Women’s Long Sleeve Sublimated Jersey | Sizes: XS-XXL Oversize: 3XL 10% upcharge on 3XL | \$88.50 | \$77.50 | \$67.00 |
| TIGHTS | Description | Sizes | 72 | VH | DP |
| 3V972SU | Women’s Tight with Sublimated Side Panel | Sizes: XS-XXL | \$39.00 | N/A | N/A |

VOLLEYBALL SUBLIMATION STYLE DETAILS

| | | |
|--|---|---|
| JERSEYS Sizes: S-XL **Refer to page 2 for fabric content and color options. | 8S1S2GU – Girl's Sublimated Volleyball Raglan Sleeve Jersey <ul style="list-style-type: none"> •Raglan sleeves •Self-material mitered V-neck •4 Side sew sublimated label lower left front •"R RUSSELL" right front chest •Imported | 8S2S2GU – Girl's Sublimated Volleyball Raglan Long Sleeve Jersey <ul style="list-style-type: none"> •Raglan long sleeves •Self-material mitered V-neck •4 Side sew sublimated label lower left front •"R RUSSELL" right front chest •Imported |
| Decoration Placements | 3, 6, 7, 8, 9 | |
| Decoration Type | Sublimation only | |
| Decoration Pricing | Four locations included in the price \$5.00 charge for each additional decoration placement | |
| Decoration Options | Placements: 3, 32, 35 - \$5.00 each | |
| SHORTS Sizes: S-XL **Refer to page 2 for fabric content and color options. | 9S1S2GU – Girl's Sublimated Volleyball Short <ul style="list-style-type: none"> •Straight hem bottom •Covered waistband with quick cord elastic •5" Inseam Adult, 5.5" inseam Girls •"R RUSSELL" upper right front •Imported | |
| Decoration Placements | 17, 18 | |
| Decoration Type | Sublimation only | |
| Decoration Pricing | One location included in the price | |

| | |
|---------------|--------------------------|
| Fabric | S2 |
| | 91% polyester 9% Spandex |

| JERSEYS | Description | Sizes | S2 |
|----------------|--|--------------|----------------|
| 8S1S2GU | Girl's Sublimated Volleyball Raglan Sleeve Jersey | Sizes: S-XL | \$55.00 |
| 8S2S2GU | Girl's Sublimated Volleyball Raglan Long Sleeve Jersey | Sizes: S-XL | \$60.00 |
| SHORTS | Description | Sizes | S2 |
| 9S1S2GU | Girl's Sublimated Volleyball Short | Sizes: S-XL | \$40.00 |

SUBLIMATION STOCK PATTERNS

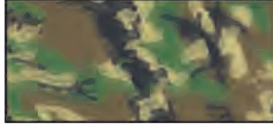
SUBLIMATED STOCK PATTERNS

CAMO-KAZE



COLOR 1 ■ COLOR 2 ■ COLOR 3 ■

COMBAT-KAZE



COLOR AS IS

STARS & STRIPES



COLOR AS IS

ROCK



COLOR 1 ■ TONAL

APEX



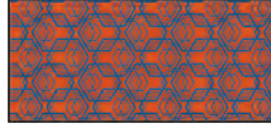
COLOR 1 ■ COLOR 2 ■

CARBON



COLOR AS IS

HEXAGON



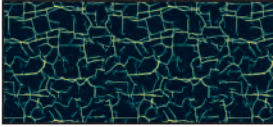
COLOR 1 ■ COLOR 2 ■

THE HIVE



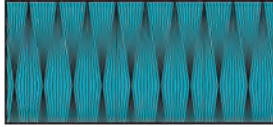
COLOR 1 ■ TONAL/WHITE

FLASH



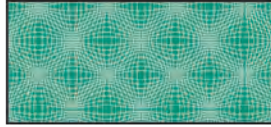
COLOR 1 ■ COLOR 2 ■

TENSION



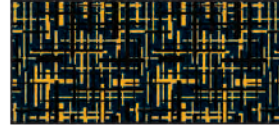
COLOR 1 ■ COLOR 2 ■

SHOCKWAVE



COLOR 1 ■ COLOR 2 □

MATRIX



COLOR 1 ■ COLOR 2 ■

CIRCUIT



COLOR 1 ■ COLOR 2 ■

DIGITAL CAMO



COLOR 1 ■ COLOR 2 ■ COLOR 3 □

DRILL



COLOR 1 ■ COLOR 2 □ COLOR 3 ■

HONEYCOMB



COLOR 1 ■ COLOR 2 □

TRIBAL TIGER



COLOR 1 ■ COLOR 2 □

LEOPARD



COLOR 1 ■ COLOR 2 ■

HOLD THAT TIGER



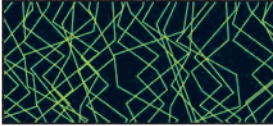
COLOR 1 ■ COLOR 2 ■

AWARENESS



COLOR 1 ■ COLOR 2 ■

LIGHTNING



COLOR 1 ■ COLOR 2 ■

SOLID



COLOR 1 ■

PINSTRIPES



COLOR 1 ■ COLOR 2 ■



R
RUSSELL

GNU

12

SPALDING
COMPOSITE LEATHER

SPECIAL ORDER

LONG SLEEVE CUSTOM VOLLEYBALL JERSEY

3V672L1 - 72 Cloth \$88.50
 3V6VTL1 - VT Cloth \$88.50

Sizes: XS -XXL Oversize: 3XL

- Tight fit construction
- 3V672L1 – 72 Cloth - Front Body/Neck/Upper Back Insert ; VT Cloth - Back Body/Sleeve
- 3V6VTL1 – VT Cloth - Front Body/Upper Back Insert; 72 Cloth- Neck/Sleeves/Back Body/Piping
- Y neck design with piping
- Upper yoke insert
- Yoke and side body piping
- Set-in long sleeves
- Hem sleeves and bottom openings
- “R Russell” logo right upper front chest

Body Options:

| | |
|------------------|--------|
| ID Tags | \$4.00 |
| + 1” body length | \$4.00 |
| + 2” body length | \$4.00 |
| + 3” body length | \$7.00 |
| + 4” body length | \$7.00 |
| Half Sleeve | N/C |

Decoration Type:

Screen Print

Decoration Placements:

6, 7, 8V (logo only), 9C, 32, 35, BN or 3

Notes:

Short hook-up – 2V372XT – See pg. 108



OPTIONS



STEPS



| STEPS | AS SHOWN |
|---|----------|
| Step 1: Front and back body sleeves | Royal |
| Step 2: Neck | Gold |
| Step 3: Upper back insert | Royal |
| Step 4: Piping | White |

CAP SLEEVE CUSTOM VOLLEYBALL JERSEY

2V472XS - 72 Cloth \$78.00
 2V4VTXS - VT Cloth \$78.00

Sizes: XS-XXL Oversize: 3XL

- Tight fit construction
 - Raglan cap sleeve
 - Drop tail bottom
 - Flatseam construction at sleeves and design lines
 - Contrasting back body, sleeves and front/back inserts
 - R "Russell" logo right upper front chest
- 2V472XS – 72 cloth front body, lower front / VT back neck facing, back body, sleeves, front and back inserts
 - 2V4VTXS – VT cloth front body, lower front / 72 back neck facing, back body, sleeves, front and back inserts

Body Options:

| | |
|------------------|--------|
| ID Tags | \$4.00 |
| + 1" body length | \$4.00 |
| + 2" body length | \$4.00 |
| + 3" body length | \$7.00 |
| + 4" body length | \$7.00 |

Decoration Type:

Screen Print

Decoration Placements:

6, 7, 8, 9C, BN or 3

NOTES:

Stock version – 2V4DPXK
 Custom tight hook up – 2V372XT
 Stock tight hook up – 2V372XK and 2V572XK



STEPS



| STEPS | AS SHOWN |
|--|--------------|
| Step 1: Body, back neck facing | Purple |
| Step 2: Sleeves | White |
| Step 3: Front & back inserts | Burnt Orange |
| Step 4: Lower front inserts | White |

OPTIONS



FRONT VIEW



BACK VIEW

PERFORMANCE TIGHT

2V372XT - 72 Cloth

\$38.00

Sizes: XS - XXL Oversize: 3XL

- Low rise cut
- 1" flat covered elastic waistband
- Flatseams at panels
- Added back seam for comfort fit
- 3" finished inseam
- "R Russell" logo on lower right leg

Body Options:

| | |
|------------------|--------|
| ID Tags | \$4.00 |
| + 1" body length | \$4.00 |
| + 2" body length | \$4.00 |
| + 3" body length | \$7.00 |
| + 4" body length | \$7.00 |

Decoration Type:

N/A

Decoration Placements:

N/A

Notes:

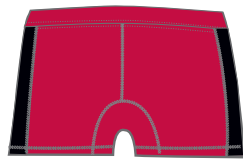
Stock version 2V372XK (3" inseam) and 2V572XK (5" inseam)



OPTIONS

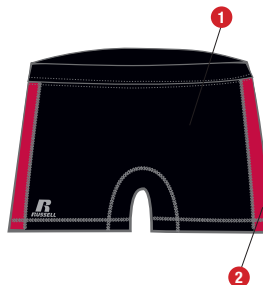


FRONT VIEW



BACK VIEW

STEPS



| STEPS | AS SHOWN |
|-------------------------------|----------|
| Step 1: Body | Black |
| Step 2: Side panels | True Red |



WARRIORS

6

SPALDING

TF-LITE

COMP

STOCK VOLLEYBALL



CAP SLEEVE STOCK VOLLEYBALL JERSEY

2V4DPXK - DP Cloth
100% Polyester

CLOSEOUT \$11.00

Sizes: XS -XXL

- Tight fit construction
- Raglan cap sleeve
- Hem drop tail bottom opening
- Contrasting sleeves and front/back inserts

NO DECORATION AVAILABLE

NOTES:

Tight Hook-up, 2V372XK (3" inseam)

Tight Hook-up, 2V572XK (5" inseam)



BWH Black/White CWH Cardinal/White NWH Navy/White PWH Purple/White TRW True Red/White

LONG SLEEVE STOCK VOLLEYBALL JERSEY

3V6S2XK - S2 Cloth

\$36.00

94% Nylon/6% Spandex – Colors

91% Polyester/9% Spandex – White

Sizes: XS - XXL

- Tight fit construction
- Y neck design with piping
- Contrasting fabric V2 back and sleeve
- Set-in long sleeve with hem
- Contrasting side piping wraps front to back

Decoration Type:

Screen Print

Decoration Placements:

6, 7, 8V (logo only), 9C, 32, 35 (3 or BN)

NOTES:

Tight Hook-up, 2V372XK (3" inseam)

Tight Hook-up, 2V572XK (5" inseam)



BWH Black/White CWH Cardinal/White DWH Dark Green/White MWH Maroon/White NWH Navy/White
PWH Purple/White ROW Royal/White TRW True Red/White WWW White/White



BLK Black CRD Cardinal DGR Dark Green GSV Gridiron Silver



MAR Maroon NAV Navy PUR Purple



ROY Royal TRR True Red WHI White

WOMEN'S STOCK VOLLEYBALL CAP SLEEVE V-NECK TEE

7P8S2XK - S2 Cloth (Adult) \$22.00

94% Nylon/6% Spandex Stretch Knit – Colors
91% Polyester/9% Spandex Stretch Knit – White

Adult Sizes: XS-XXL

- Moisture wicking fabric
- Self-material V-neck
- Compression body and sleeve
- Flat-lock seamed construction reduces abrasion
- Two-needle cover stitch hemmed sleeves and bottom
- "R RUSSELL" on right upper front chest
- "R RUSSELL" jock tag lower left front
- Imported

Decoration Type:

Screen Print

Decoration Placements:

6, 7, 8, 9C (3 or BN)

LOW RISE TIGHT

2V372XK - 72 Cloth (3" inseam)
2V572XK - 72 Cloth (5" inseam)
90% Nylon/10% Spandex - Colors

\$23.50
\$27.00

Sizes: XS-XXL

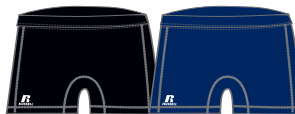
- Low rise design
- 1" flat elastic waistband
- New back seam for comfort fit
- Gusset with lining
- 3 or 5" finished inseam
- "R Russell" logo at lower right front

Decoration Placements:

NA



Back View



BLK Black

NAV Navy

LOW RISE TIGHT

2V572XK - 72 Cloth (5" inseam) \$27.00
90% Nylon/10% Spandex - Colors
90% Polyester/10% Spandex - White

Sizes: XS-XXL

- Low rise design
- 1" flat elastic waistband
- Back seam for comfort fit
- Gusset with lining
- 5" finished inseam
- "R Russell" logo at lower right front

Decoration Placements:

N/A



Back View



BLK Black

NAV Navy



WARRIORS

6

SPALDING

TF-LITE

COMB

STOCK VOLLEYBALL



CAP SLEEVE STOCK VOLLEYBALL JERSEY

2V4DPXK - DP Cloth
100% Polyester

CLOSEOUT \$11.00

Sizes: XS -XXL

- Tight fit construction
- Raglan cap sleeve
- Hem drop tail bottom opening
- Contrasting sleeves and front/back inserts

NO DECORATION AVAILABLE

NOTES:

Tight Hook-up, 2V372XK (3" inseam)

Tight Hook-up, 2V572XK (5" inseam)



BWH Black/White CWH Cardinal/White NWH Navy/White PWH Purple/White TRW True Red/White

LONG SLEEVE STOCK VOLLEYBALL JERSEY

3V6S2XK - S2 Cloth

\$36.00

94% Nylon/6% Spandex – Colors

91% Polyester/9% Spandex – White

Sizes: XS - XXL

- Tight fit construction
- Y neck design with piping
- Contrasting fabric V2 back and sleeve
- Set-in long sleeve with hem
- Contrasting side piping wraps front to back

Decoration Type:

Screen Print

Decoration Placements:

6, 7, 8V (logo only), 9C, 32, 35 (3 or BN)

NOTES:

Tight Hook-up, 2V372XK (3" inseam)

Tight Hook-up, 2V572XK (5" inseam)



PWH Purple/White ROW Royal/White TRW True Red/White WWW White/White



BLK Black CRD Cardinal DGR Dark Green GSV Gridiron Silver



MAR Maroon NAV Navy PUR Purple



ROY Royal TRR True Red WHI White

WOMEN'S STOCK VOLLEYBALL CAP SLEEVE V-NECK TEE

7P8S2XK - S2 Cloth (Adult) \$22.00

94% Nylon/6% Spandex Stretch Knit – Colors
91% Polyester/9% Spandex Stretch Knit – White

Adult Sizes: XS-XXL

- Moisture wicking fabric
- Self-material V-neck
- Compression body and sleeve
- Flat-lock seamed construction reduces abrasion
- Two-needle cover stitch hemmed sleeves and bottom
- "R RUSSELL" on right upper front chest
- "R RUSSELL" jock tag lower left front
- Imported

Decoration Type:
Screen Print

Decoration Placements:
6, 7, 8, 9C (3 or BN)

LOW RISE TIGHT

2V372XK - 72 Cloth (3" inseam) \$23.50
2V572XK - 72 Cloth (5" inseam) \$27.00
90% Nylon/10% Spandex - Colors

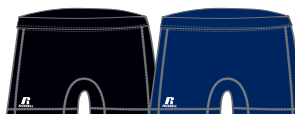
Sizes: XS-XXL

- Low rise design
- 1" flat elastic waistband
- New back seam for comfort fit
- Gusset with lining
- 3 or 5" finished inseam
- "R Russell" logo at lower right front

Decoration Placements:
NA



Back View



BLK Black NAV Navy

LOW RISE TIGHT

2V572XK - 72 Cloth (5" inseam) \$27.00
90% Nylon/10% Spandex - Colors
90% Polyester/10% Spandex - White

Sizes: XS-XXL

- Low rise design
- 1" flat elastic waistband
- Back seam for comfort fit
- Gusset with lining
- 5" finished inseam
- "R Russell" logo at lower right front

Decoration Placements:
N/A



Back View



BLK Black NAV Navy