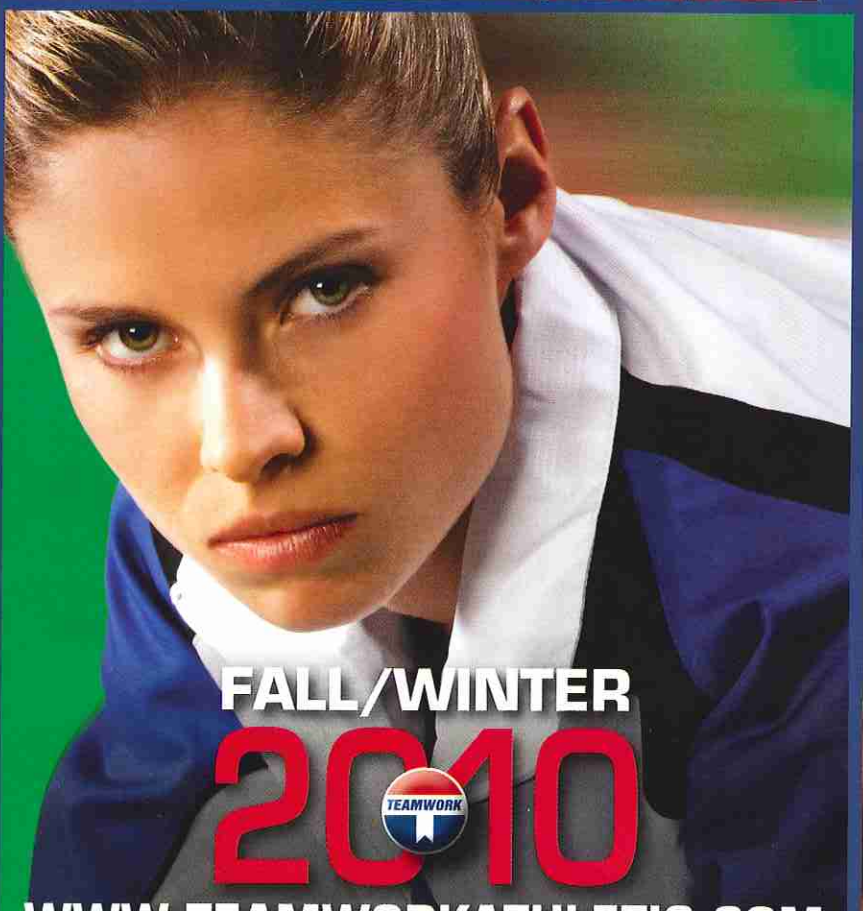
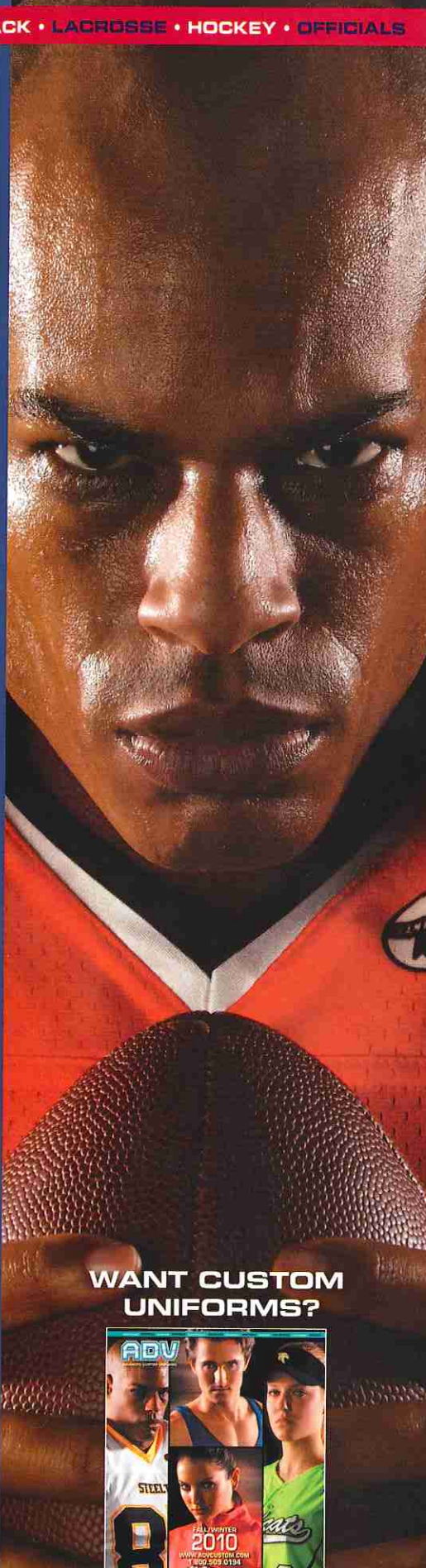
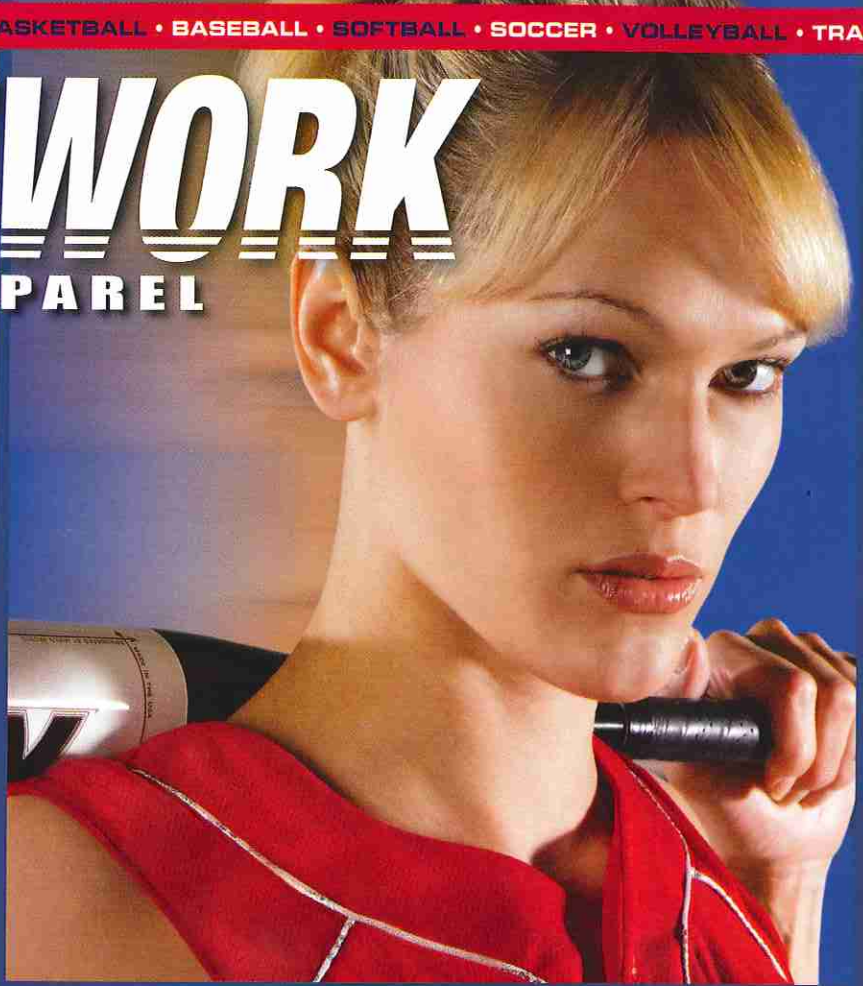


TEAMWORK

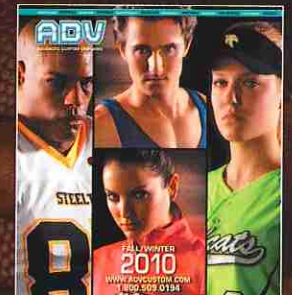
ATHLETIC APPAREL



FALL/WINTER
2010



WANT CUSTOM
UNIFORMS?



\$5.00

WWW.TEAMWORKATHLETIC.COM

MIDFIELDER

REVERSIBLE SLEEVELESS LACROSSE JERSEY



2367 YOUTH | LIST \$15.90

2357 ADULT | LIST \$15.90

STYLE

Reversible Sleeveless Lacrosse Jersey

FABRIC

Medium Weight Nylon Tricot Mesh

SIZES

Youth S/M-L/XL, Adult S/M-2XL/3XL,
Add (2XL/3XL-\$5)

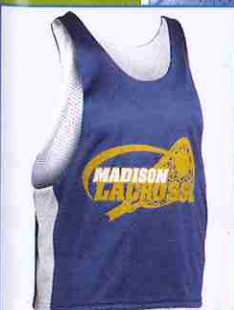
FEATURES

- Unique side contrast color inserts
- Opens on bottom for easy lettering on both sides
- Full, comfortable cut



1 ROY/WHT
2 SCR/WHT
4 BLK/WHT
7 INVY/WHT
9 MAR/WHT
26 DGN/WHT

2357



MIDFIELDER

4320 Shorts, Pg. 109

LACROSSE



See page 121
for measurement
instructions.

ZONE

REVERSIBLE SLEEVELESS LACROSSE JERSEY



2366 YOUTH | LIST \$14.90

2356 ADULT | LIST \$14.90

STYLE

Reversible Sleeveless Lacrosse Jersey

FABRIC

Medium Weight Nylon Tricot Mesh

FEATURES

- Opens on bottom for easy lettering on both sides
- Full, comfortable cut

SIZES

Youth S/M-L/XL, Adult S/M-2XL/3XL,
Add (2XL/3XL-\$5)



1 ROY/WHT
2 SCR/WHT
4 BLK/WHT
7 INVY/WHT
9 MAR/WHT
26 DGN/WHT

YOUTH JERSEY

S/M 30-32

L/XL 34-36

ADULT JERSEY

S/M 36-40

L/XL 44-48

2XL/3XL 52-56

2356

4320 Shorts, Pg. 109



ZONE

LACROSSE

JERSEYS & SHORTS

See page 121 for measurement instructions.

YOUTH JERSEY

S/M 30-32
L/XL 34-36

ADULT JERSEY

S 34-36
M 38-40
L 42-44
XL 46-48
2XL 50-52
3XL 54-56
4XL 58-60
5XL 62-64
G 58-60

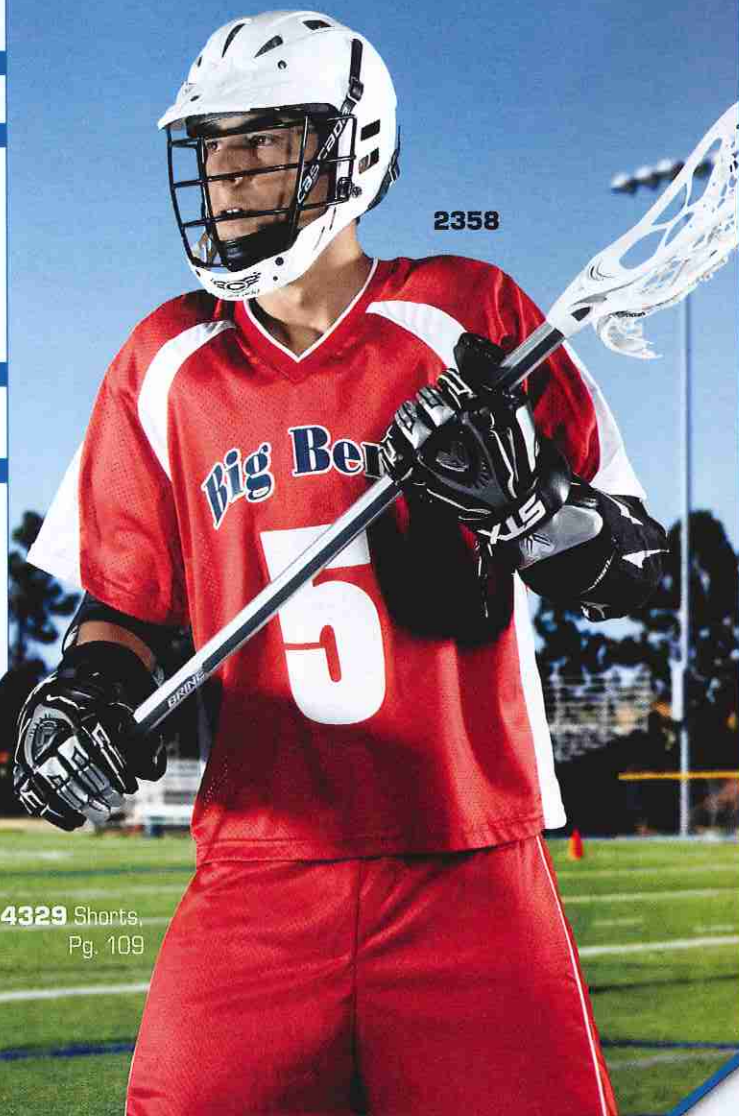
YOUTH SHORT

S 20-22
M 24-26
L 28-30

ADULT SHORT

XS 24-26
S 28-30
M 32-34
L 36-38
XL 40-42
2XL 44-46
3XL 48-50
4XL 52-54

4329 Shorts,
Pg. 109



2358



ATLANTIC LACROSSE JERSEY

2363 YOUTH | LIST \$23.90

2353 ADULT | LIST \$25.90

STYLE

- Tricot Mesh Lacrosse Jersey with Two-Ply Yoke

FABRIC

- 100 Denier Nylon Tricot Mesh with Two-Ply Poly Dazzle Shoulder/Yoke

FEATURES

- Contrast color shoulder cord inserts
- Two-color coordinating neck trim
- Longer waist-cut length
- Longer sleeves with wider openings

SIZES

- Youth S/M-L/XL, Adult S-3XL, Add (2XL-\$5, 3XL-\$10)



15 ROY/WHT
25 SCR/WHT
45 BLK/WHT
65 GLD/WHT
75 NAVY/WHT
265 DGN/WHT

SOUTHERN LACROSSE JERSEY

2364 YOUTH | LIST \$23.90

2354 ADULT | LIST \$25.90

STYLE

- Tricot Mesh Lacrosse Jersey with Two-Ply Yoke

FABRIC

- 100 Denier Nylon Tricot Mesh with Two-Ply Nylon Tricot Shoulder/Yoke Panels

FEATURES

- Reinforced construction
- Longer waist-cut length
- Longer sleeves with wider openings

SIZES

- Youth S/M-L/XL, Adult S-3XL, Add (2XL-\$5, 3XL-\$10)



1 ROY
2 SCR
4 BLK
5 WHT
6 GLD
7 NAVY



DESPERADO LACROSSE JERSEY

2368 YOUTH | LIST \$26.90

2358 ADULT | LIST \$28.90

STYLE

- Tricot Mesh Lacrosse Jersey with Two-Ply Yoke

FABRIC

- 100 Denier Nylon Tricot Mesh with Two-Ply Tricot Mesh Shoulder/Yoke Panels

SIZES

- Youth S/M-L/XL, Adult S-3XL, Add (2XL-\$5, 3XL-\$10)

FEATURES

- Unique dual body panel design with coordinating sleeve panels
- Two-color design options available
- Longer waist-cut length
- Longer sleeves with wider openings



15 ROY/WHT
25 SCR/WHT
26 DGN/WHT
45 BLK/WHT
51 WHT/ROY
52 WHT/SCR
54 WHT/BLK
57 WHT/NAVY
75 NAVY/WHT
526 WHT/DGN



PACIFIC LACROSSE JERSEY

2365 YOUTH | LIST \$24.90

2355 ADULT | LIST \$26.90

STYLE

- Tricot Mesh Lacrosse Jersey with Two-Ply Yoke

FABRIC

- 100 Denier Nylon Tricot Mesh with Two-Ply Poly Dazzle Shoulder/Yoke Panels

FEATURES

- Three-stripe coordinating neck trim
- Longer waist-cut length
- Longer sleeves with wider openings

SIZES

- Youth S/M-L/XL, Adult S-3XL, Add (2XL-\$5, 3XL-\$10)



12 ROY/SCR/ROY
24 SCR/BLK/SCR
51 WHT/ROY/WHT
52 WHT/SCR/WHT
54 WHT/BLK/WHT
57 WHT/NAVY/WHT
64 GLD/BLK/GLD
526 WHT/DGN/WHT



SIDE STRIPE SHORT

4310 YOUTH | LIST \$26.90

4320 ADULT | LIST \$28.90

STYLE

- Tricot Mesh Short with Side Stripes

FABRIC

- 100 Denier Nylon Tricot Mesh with Internal Polyester Lining

FEATURES

- Solid color design with contrasting three-stripe trim
- Adult inseam 7.25" to 8.5"
- Extended V-notch sides
- Roomy thigh and leg openings



YOUTH SPECIFIC FEATURES

- Durable 2" waistband with internal drawcord
- Youth inseam 6" - 7"

SIZES

- Youth S-L, Adult S-3XL, Add (2XL-\$5, 3XL-\$10)

STEELMESH™ SHORT



4014 YOUTH | LIST \$13.90

4024 ADULT | LIST \$15.90

STYLE

- Steelmesh™ Short

FABRIC

- 100% Polyester Deluxe Steelmesh™

SIZES

- Youth S-L, Adult S-3XL, Add (2XL-\$5, 3XL-\$10)

FEATURES

- 7" Inseam - standard fit
- Longer rise style short
- Durable elastic waistband - no drawcord
- Adult inseam 7.25" to 8.5"

YOUTH SPECIFIC FEATURES

- Youth inseam 4" - 5"



ULTIMATE FIT SHORT

4319 YOUTH | LIST \$24.90

4329 ADULT | LIST \$26.90

STYLE

- Ultimate Fit Short

FABRIC

- 100 Denier Nylon Tricot Mesh with Poly Dazzle Side Panels, Contrast Piping and Polyester Lining

FEATURES

- Contrast color side piping
- Two and three-color design
- Reinforced construction
- Extended V-notch sides
- Durable 2" waistband with internal drawcord
- Adult: inseam 7.25" - 8.5"

YOUTH SPECIFIC FEATURES

- Youth inseam 6" - 7"

SIZES

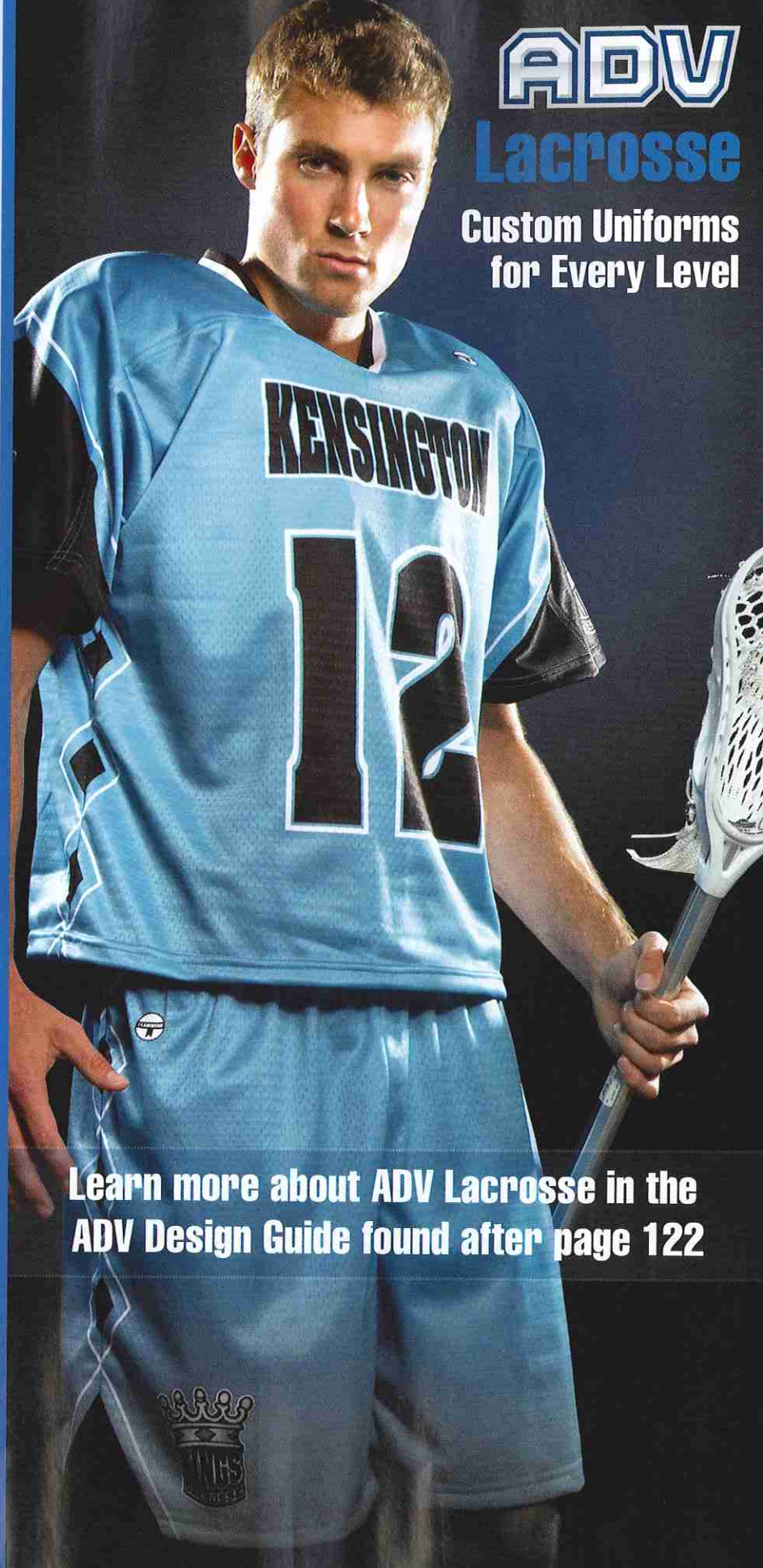
- Youth S-L, Adult S-3XL, Add (2XL-\$5, 3XL-\$10)



ADV

Lacrosse

Custom Uniforms for Every Level



Learn more about ADV Lacrosse in the ADV Design Guide found after page 122

1 Go to advcustom.com and choose your CUT and FABRIC



JERSEY



SHORT



Base

POLY-TUFF MESH

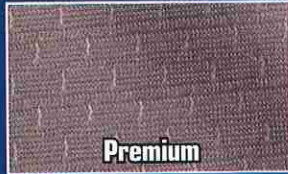
Durable open-holed mesh delivers excellent ventilation, comfort & toughness.



Base

TRICOT MESH

Open-hole construction & smooth finish delivers excellent ventilation, superior sheen & long-lasting durability.

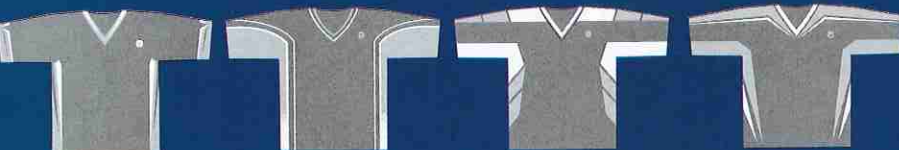


Premium

STEELMESH™

Closed-hole mesh construction delivers the toughest fabric for the roughest play. (+\$10 per item)

2 Choose your DESIGN



SNIPER

CROSSOVER

GOAL

SHARPSHOOTER



VICTORY

DIAMOND

KEYLINE

Visit our website to view more design options

3 Choose your COLORS

Choose primary, secondary & accent colors



4 Decorate with NAMES, LOGOS and NUMBERS



SMITH SMITH SMITH SMITH
 23 23 23 23 23 23

5 SUBMIT your design. You're done!

Submit your design to an authorized Teamwork Athletic dealer to complete the order process.

BUILD YOUR OWN



Shown in:

PRIMARY

SECONDARY

ACCENT

Available in any color combo

SNIPER



BOYS' JERSEY:
 XS(22-24), S(26-28), M(30-32), L(34-36), XL(38-40)

BOYS' SHORT:
 XS(16-18), S(20-22), M(24-26), L(28-30), XL(32-34)

MEN'S JERSEY:
 S(34-36), M(38-40), L(42-44), XL(46-48), 2XL(50-52), 3XL(54-56), 4XL(58-60); Add 2XL-\$4, 3XL-\$8, 4XL-\$12

MEN'S SHORT:
 S(28-30), M(32-34), L(36-38), XL(40-42), 2XL(44-46), 3XL(48-50), 4XL(52-54); Add 2XL-\$4, 3XL-\$8, 4XL-\$12

Suggested Retail Prices:


Boys' Jersey \$60.90
 Boys' Short \$24.90
 Men's Jersey \$75.90
 Men's Short \$39.90

Final ADV pricing is set by your dealer. Please ask them how ADV can fit into your team's budget.

CUSTOM LACROSSE UNIFORM

ADV

CROSS-OVER

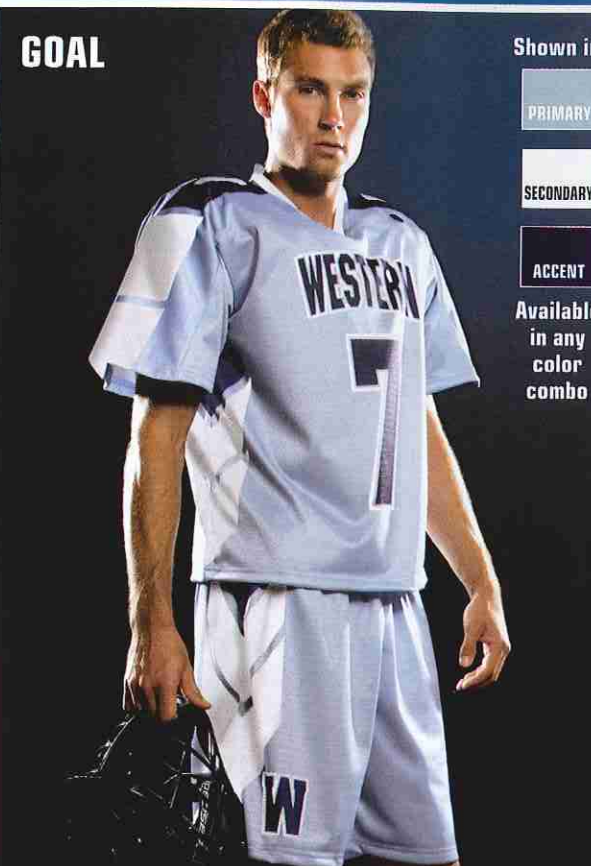


Shown in:

- PRIMARY
- SECONDARY
- ACCENT

Available in any color combo

GOAL

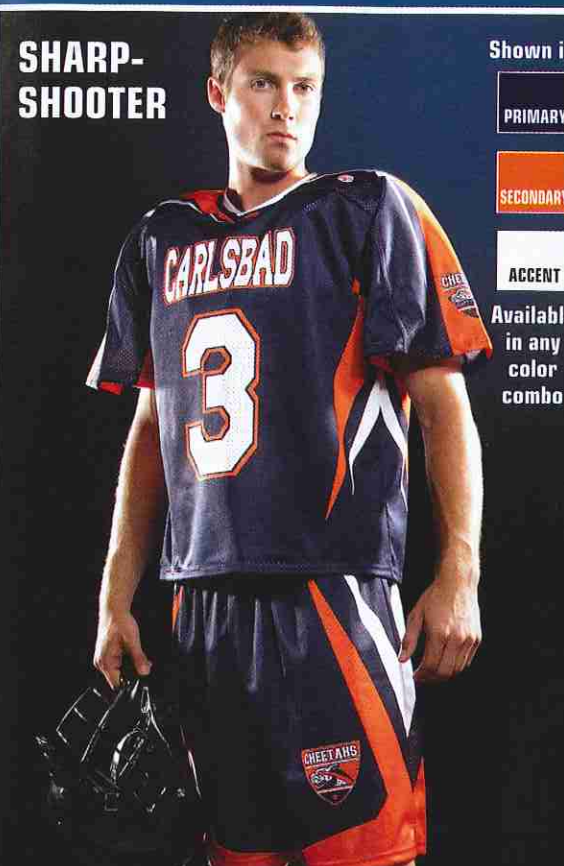


Shown in:

- PRIMARY
- SECONDARY
- ACCENT

Available in any color combo

SHARP-SHOOTER




Shown in:

- PRIMARY
- SECONDARY
- ACCENT

Available in any color combo

Visit [ADV](#) online for more Lacrosse designs.

VICTORY

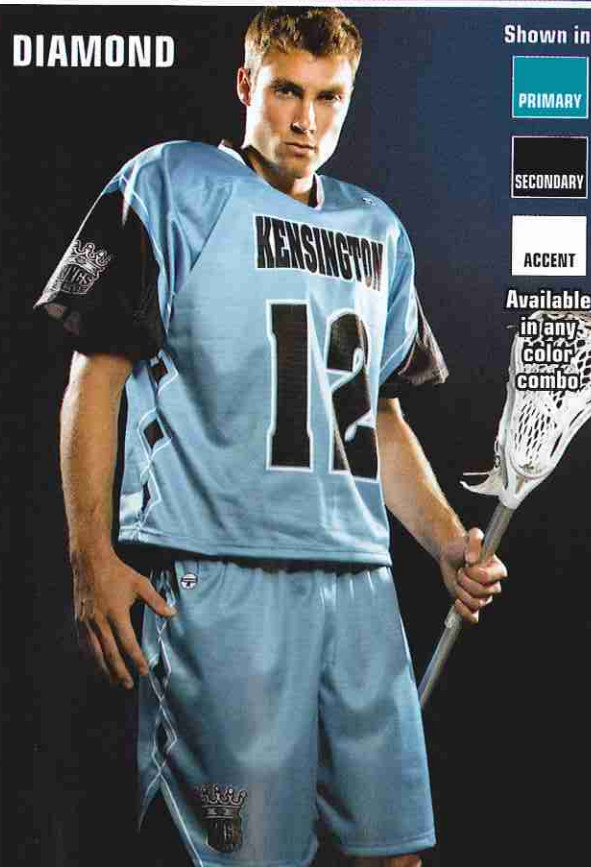


Shown in:

- PRIMARY
- SECONDARY
- ACCENT

Available in any color combo

DIAMOND

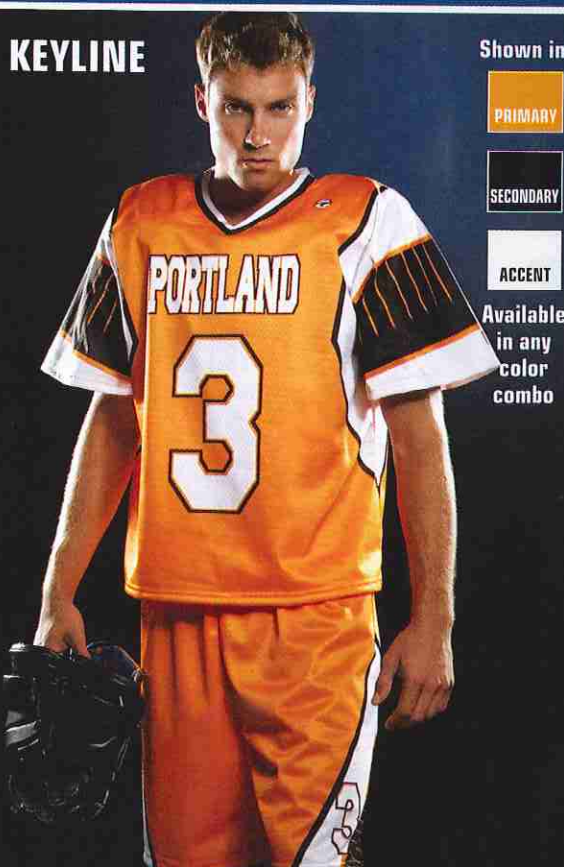


Shown in:

- PRIMARY
- SECONDARY
- ACCENT

Available in any color combo

KEYLINE



Shown in:

- PRIMARY
- SECONDARY
- ACCENT

Available in any color combo