



rawlings.com



ALBERT PUJOLS  
NL MVP  
2009, 2008, 2006



JOE MAUER  
AL MVP  
2009



OFFICIAL HELMET OF MAJOR LEAGUE BASEBALL®  
EXCLUSIVE SUPPLIER OF BASEBALLS TO MAJOR LEAGUE BASEBALL®



# POWER BALANCE® APPAREL



As the number one baseball brand worldwide, athletes have come to expect high-quality, high-performing gear from Rawlings®. Now, Rawlings has expanded their performance expertise by partnering with Power Balance® to provide elite athletes with a unique, product offering. Power Balance® is performance technology that is a favorite among elite athletes and individuals that strive to perform at the top of their game. This revolutionary technology is changing the way people live, work and play.

## POWER BALANCE® IS PERFORMANCE TECHNOLOGY



### POWER BALANCE® PERFORMANCE SHIRT **NEW** PBPS

- Contoured fit
  - Crew neck short sleeve shirt with set in sleeves
  - 92% Polyester/8% Spandex
  - Heather Grey Body
  - Matching sleeve and neck trim
  - Side and back mesh material for breathability
  - Power Balance Hologram on shoulder insert
  - Power Balance and Rawlings Style logos on shoulder insert
  - Rawlings Style logo on center back neck
  - Mens Sizes: S(34-36), M(38-40), L(42-44), XL(46-48), XXL(50-52)
- Mens Suggested List: \$57.10



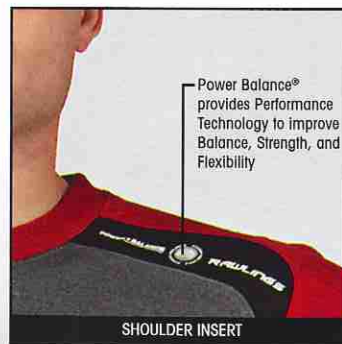
POWER BALANCE® HOLOGRAM

MESH MATERIAL FOR BREATHABILITY



MESH MATERIAL FOR BREATHABILITY

BACK



Power Balance® provides Performance Technology to improve Balance, Strength, and Flexibility

SHOULDER INSERT

### HOW DOES POWER BALANCE WORK?

Most everything has a frequency inherent to it. Some frequencies react positively with your body and others negatively. When the hologram comes in contact with your body's energy field, it allows your body to interact with the natural beneficial frequency stored within the hologram. This results in improved energy flow throughout your body.

Apparel shown with extra options.  
Team names, logos and colors are for demonstration purposes only and are not meant to identify any affiliation with Rawlings Sporting Goods or Jarden Corporation.

**LRMT - MENS  
YLRMT - YOUTH**

- Mock turtleneck long sleeve shirt with raglan sleeves
- Pro-Dri® Moisture Management 100% Polyester Material
- 2-Tone Design: Grey body color, with the mock turtle neck and raglan sleeves matching
- Mens – 1 1/2" rib knit mock turtleneck with 2 1/2" rib knit sleeve cuffs
- Youth – 1 1/4" rib knit mock turtleneck with 2" rib knit sleeve cuffs
- Graphic transfer Rawlings® Oval R® left sleeve end
- Mens Sizes: S(34-36), M(38-40), L(42-44), XL(46-48), XXL(50-52)
- Youth Sizes: S(26-28), M(30-32), L(34-36)

Mens Suggested List: \$24.30  
Youth Suggested List: \$21.40



**NEW  
COLOR**



**SRMT - MENS  
YSRMT - YOUTH**

- Crew neck short sleeve shirt with raglan sleeves
- Pro-Dri® Moisture Management 100% Polyester Material
- 1" rib knit crew neck with solid colors
- Graphic transfer Rawlings® Oval R® left sleeve end
- Mens Sizes: S(34-36), M(38-40), L(42-44), XL(46-48), XXL(50-52)
- Youth Sizes: S(26-28), M(30-32), L(34-36)

Mens Suggested List: \$22.90  
Youth Suggested List: \$20.00



**NEW  
COLOR**



Apparel shown with extra options.  
Team names, logos and colors are for demonstration purposes only and are not meant to identify any affiliation with Rawlings Sporting Goods or Jordan Corporation.



# UNDERGARMENTS & OUTERWEAR APPAREL

Apparel shown with extra options.  
Team names, logos and colors are for demonstration purposes only and are not meant to identify any affiliation with Rawlings Sporting Goods or Jarden Corporation



### RMS9 - ADULT

- 100% polyester 70 denier tricot mesh
  - Cover elastic waistband with inside drawcord
  - 2 ply
  - 9" inseam: S - 3XL
  - 7" inseam: 2XS - XS
  - Sizes: 2XS, XS, S, M, L, XL, 2XL, 3XL
- Suggested List: \$12.90

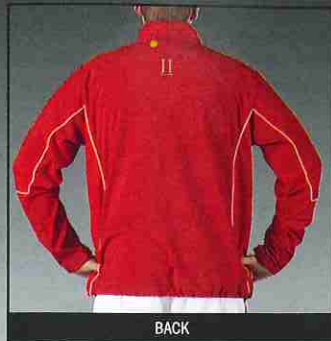


### ZBYS1

- Rawlings powered by Zoombang™ protective youth shirt
  - Unique visco-elastic polymer pad, lightweight and conformal
  - Proven better protection than EVA foams and gels
  - 82% Polyester/18% Spandex Cloth
  - White only
  - Youth Sizes: S-XL
- Youth Suggested List: \$42.90

Apparel shown with extra options.  
 Team names, logos and colors are for demonstration purposes only and are not meant  
 to identify any affiliation with Rawlings Sporting Goods or Jarden Corporation

RTHJ shown with 1 1/2", Full Block, "COACH DOOLEY" PL1;  
 Best Size, Full Block, Step Down "SXU" PL3;  
 3" Cougar Logo F5 PL17L; 2" Full Block Number PL14



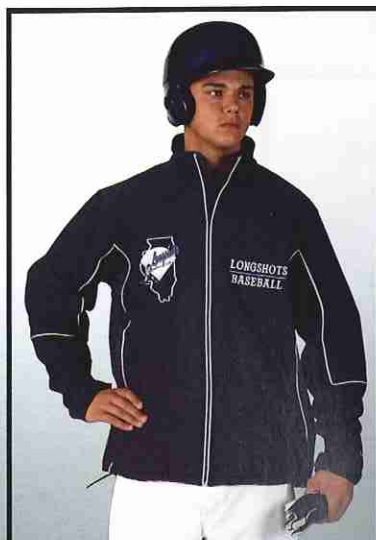
BACK

**THERMAL JACKET** **NEW**

**RTHJ**

- Long sleeve jacket with full zipper
- 86% Polyester/14% Spandex cloth bonded to 100% polyester fleece
- Wind and water resistant
- Side and neck insert fabric is 100% Polyester Dobby
- Stand up collar
- Two zippered front pockets
- Adjustable Velcro wrist bands
- Straight hem with two side drawstring cords
- White accent piping along zipper, sleeves and side inserts
- Mens Sizes: S(34-36), M(38-40), L(42-44), XL(46-48),  
 XXL(50-52), XXXL(54-56)

Mens Suggested List: \$128.60



RTHJ shown with Custom  
 "Longshots State" Logo PL1; Custom  
 "Longshots Baseball" Logo PL3





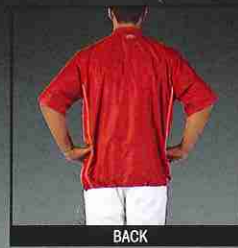
# UNDERGARMENTS & OUTERWEAR APPAREL

SBJ shown with Best Size, Special "VENOM" PL3

Apparel shown with extra options. Team names, logos and colors are for demonstration purposes only and are not meant to identify any affiliation with Rawlings Sporting Goods or Jarden Corporation



MESH FOR BREATHABILITY



BACK

## BATTING CAGE

### SBJ - MENS

## NEW

### YSBJ - YOUTH

- Short sleeve pullover jacket with modified raglan sleeves
- Quarter zip front
- 100% Nylon Ripstop with Cire finish shell
- 100% Poly Mesh Liner
- Underarm and shoulder mesh inserts for breathability
- White accent piping on the sides
- Straight hem, drawstring cord
- Mens Sizes: S(34-36), M(38-40), L(42-44), XL(46-48), XXL(50-52)
- Youth Sizes: M(30-32), L(34-36)

Mens Suggested List: \$47.10

Youth Suggested List: \$44.30



SIDE



YSBJ shown with 4" "BR", 1" Full Block "BASEBALL" PL3

SBJ shown with 5" "C Logo with Horse Head"; 1" Times Bold "WOOSTER" PL3; 3" Full Block Number PL17R

Apparel shown with extra options.  
 Team names, logos and colors are for demonstration purposes only and are not meant  
 to identify any affiliation with Rawlings Sporting Goods or Jarden Corporation

TJLS shown with Best Size, Full Block "ROMEO",  
 Best Size Bulldog 122, Best Size,  
 Full Block "ATHLETICS" PL3



BACK

SIDE

**TEAM JACKET**  
**TJLS - MENS**

- Long sleeve pullover jacket with quarter zip front
  - Rip Stop 100% Nylon shell
  - Mesh lining in the body with rayon lining in the sleeves
  - Set in sleeves and a back vent
  - White chest/sleeve inserts, with accent piping
  - Two zippered front pockets
  - Straight hem, drawstring cord
  - Mens Sizes: XS(30-32), S(34-36), M(38-40),  
 L(42-44), XL(46-48), XXL(50-52)
- Mens Suggested List: \$55.70



205 RAWLINGS.COM



TJLS shown with 2" Special Style  
 Longhorn Logo PL3

TJLS shown with Special Style 1/2",  
 Straight "BLUE JAYS" with Crossed  
 Bats Logo with Baseball #137 PL3

TJLS shown with 5" Fancy "K" PL3



# UNDERGARMENTS & OUTERWEAR APPAREL

RVNW2 shown with 4" Fancy Block, Vertical Arch "VIRGINIA" PL2

Apparel shown with extra options. Team names, logos and colors are for demonstration purposes only and are not meant to identify any affiliation with Rawlings Sporting Goods or Jarden Corporation



## RVNW2 - MENS RYVNW2 - YOUTH

- V-neck pullover jacket
  - Rip Stop 100% Nylon shell
  - Mesh lining in the body with rayon lining in the sleeves
  - Rib knit v-neck, sleeve ends and slash front pockets
  - Set in sleeves
  - Straight hem, drawstring cord
  - Mens Sizes: S(34-36), M(38-40), L(42-44), XL(46-48), XXL(50-52), XXXL(54-56)
  - Youth Sizes: M(30-32), L(34-36), XL(38-40)
- Mens Suggested List: \$44.30  
Youth Suggested List: \$41.40



RVNW2 shown with Special Style "MC" Stepdown Overlapping PL3

RYVNW2 shown with Brush Script, straight "WILDCATS BASEBALL" PL1, Paw Print Logo #106 PL3

RVNW2 shown with Special Custom Layout CL7 "SUFFIELD ACADEMY" PL2

RYVNW2 shown with 1/2" Brush Script, Straight "MUSTANGS" with galloping mustang logo #133 PL3

Apparel shown with extra options.  
 Team names, logos and colors are for demonstration purposes only and are not meant  
 to identify any affiliation with Rawlings Sporting Goods or Jarden Corporation

UDFP shown with Best Size, Special Style,  
 Step Down and Touching "SVC" PL3

**DUGOUT**

**UDFP - ADULT**

**YUDFP - YOUTH**

- Long sleeve pull over
- 100% polyester fleece with accent inserts
- Full cut, open bottom with curved hem
- Finished neck and sleeve ends
- Embroidered Rawlings® Oval R® on left sleeve end
- Adult Sizes: S(34-36), M(38-40), L(42-44), XL(46-48),  
 XXL(50-52), XXXL(54-56)
- Youth Sizes: S(26-28), M(30-32), L(34-36)

Adult Suggested List: \$50.00

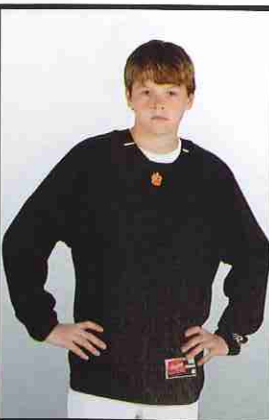
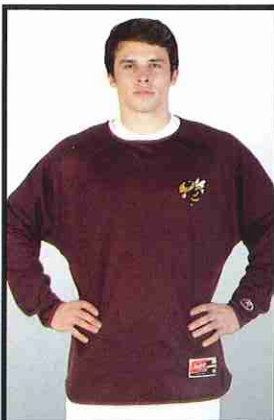
Youth Suggested List: \$47.10



**NEW  
 COLORS**



207 RAWLINGS.COM



UDFP shown with Best Size  
 Fighting Hornet Logo #130 PL3

UDFP

YUDFP shown with Paw Logo #106B DNI

UDFP shown with custom special  
 Bulldog logo DNI



# UNDERGARMENTS & OUTERWEAR APPAREL

NSCJ shown with Best Size, Custom Logo PL3;  
Best Size "RAWLINGS PHOENIX" PL1;  
Best Size Number PL17R

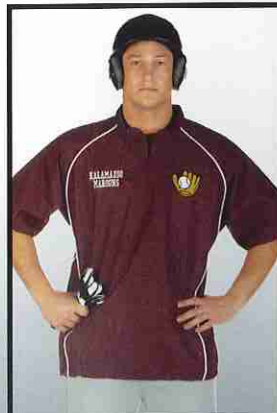
Apparel shown with extra options.  
Team names, logos and colors are for demonstration purposes only and are not meant  
to identify any affiliation with Rawlings Sporting Goods or Jarden Corporation



BACK

### ON DECK NSCJ - ADULT YNSCJ - YOUTH

- Short sleeved batting cage jacket
  - 100% textured polyester
  - Accent piping on front and back
  - Mesh underarms
  - Self fabric collar
  - Adult Sizes: S(34-36), M(38-40), L(42-44), XL(46-48),  
XXL(50-52), XXXL(54-56)
  - Youth Sizes: M(30-32), L(34-36)
- Adult Suggested List: \$38.60  
Youth Suggested List: \$35.70



NSCJ shown with Best Size Full Block,  
Straight "KALAMAZOO MAROONS"  
PL1 Ball Glove with Ball Logo  
#138 PL3



NSCJ shown with Best Size Script,  
Straight "FALLS BASEBALL" PL1  
with Crossed Bats Logo #137 PL3



YNSCJ shown with Special style  
"Tigers Baseball" PL3



### TTS9

- Moisture wicking training short
- 2 Side Pockets
- 9 1/2" Inseam
- Pro-Dri® fabric 95% Polyester/5% Spandex
- Relaxed fit for maximum mobility
- Comfortable and lightweight
- Internal drawstring
- Wrinkle free
- Men's Sizes: S-3XL

**Suggested List: \$30.00**



### CWSH

- Moisture wicking hooded sweatshirt
- 80% Cotton/ 20% Polyester
- Ultra comfortable
- Layered fabric for quality insulation
- Hood with internal drawstring
- Men's Sizes: S-3XL

**Suggested List: \$44.30**



### GDP

- Moisture wicking polo
- Pro-Dri® 95% Polyester/5% Spandex
- Self material collar with backing
- Wrinkle resistant
- Men's Sizes: S-4XL

**Suggested List: \$47.10**





# COACHES GEAR APPAREL

Apparel shown with extra options.  
Team names, logos and colors are for demonstration purposes only and are not meant to identify any affiliation with Rawlings Sporting Goods or Jarden Corporation



### ACSJ

- All weather performance jacket
  - 95% Polyester/5% Spandex
  - Water resistant
  - Full zip
  - Raised collar
  - 2 front pockets
  - Elastic in bottom hem
  - Men's Sizes: S-3XL
- Suggested List: \$55.70**



### ACSP

- All weather performance pant
  - 95% Polyester/5% Spandex
  - Water resistant
  - Elastic waist with internal drawstring
  - 2 front pockets
  - 1 back pocket
  - 32" Inseam
  - 1/4 zip from bottom hem
  - Men's Sizes: S-3XL
- Suggested List: \$55.70**

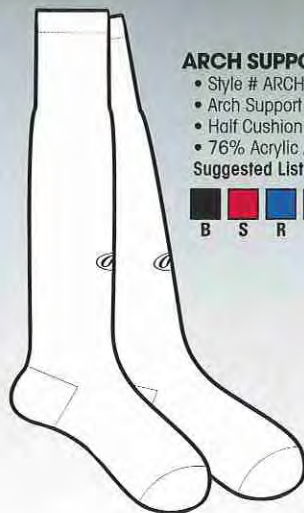


# SOCKS AND BELTS

Apparel shown with extra options.  
Team names, logos and colors are for demonstration purposes only and are not meant to identify any affiliation with Rawlings Sporting Goods or Jarden Corporation

SOCK SIZE CHART		
	SHOE SIZE	SOCK SIZE
X-SMALL	9-12	5-6
SMALL	13-3	7-8
MEDIUM	4-9	9-11
LARGE	9-12	10-13

BELT SIZE CHART	
YOUTH	Adjustable from 20" - 34"
ADULT	Adjustable from 32" - 46"



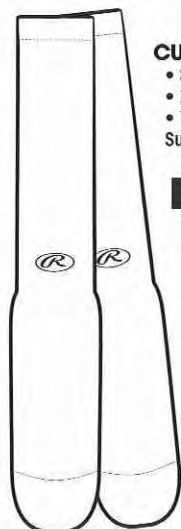
### ARCH SUPPORT CREW SOCK

- Style # ARCHCRA
  - Arch Support
  - Half Cushion Foot
  - 76% Acrylic / 15% Nylon / 9% Spandex
- Suggested List: \$5.90



### ADULT BELT

- Style # ABELT
  - Pro-Stretch Elastic Web
  - Nickel Plated Buckle
  - Leather Tabs with Rawlings Logo Embossed Keeper
  - One Size Fits Most, Size 26"-40"
- Suggested List: \$7.10

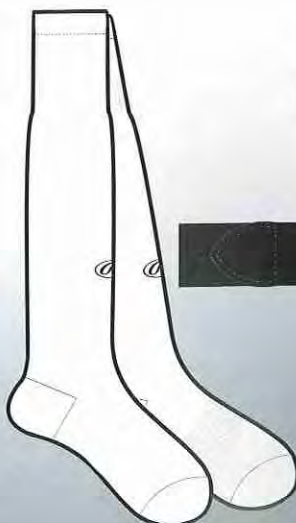


### CUSHION TUBE CREW SOCK

- Style # TUBEA
  - Full Cushion Foot
  - 76% Acrylic / 15% Nylon / 9% Spandex
- Suggested List: \$5.60



## COMBINATION PACK



### YOUTH SOCK/BELT COMBINATION PACK

- Style # YBARCB
  - One Pro-Stretch Elastic Belt
  - One Arch Support Crew
- Suggested List: \$12.90

