

UNDER ARMOUR®
MEN'S BASKETBALL



NEW 1221711 GAMEDAY ARMOUR TANK

\$59.99 // SM-XXXL // 5.8 oz. 82% NYLON, 18% ELASTANE

New MPZ® technology / Strategic pad placement for basketball player / Tank silhouette with strategic ventilation on back and under the arms / Fitted to the basketball athlete / Unique patented design that supports the core anatomy and enhances functional movements

BODY/INSET/LOGO	FIRST SHIP	LAST SHIP	AR
001 BLACK/TAXI/ALUMINUM	8/25/2011	11/15/2011	
100 WHITE/ALUMINUM/ALUMINUM	8/25/2011	11/15/2011	



NEW 1221709 GAMEDAY ARMOUR SHORT

\$59.99 // SM-XXXL // 5.8 oz. 82% NYLON, 18% ELASTANE

New MPZ® technology / Strategic pad placement for basketball player / Fitted to the basketball athlete – taller and thinner / 8" inseam, ventilated crotch and gusset / Branded waistband

BODY/INSET/LOGO	FIRST SHIP	LAST SHIP	AR
001 BLACK/TAXI/ALUMINUM	8/25/2011	11/15/2011	
100 WHITE/ALUMINUM/ALUMINUM	8/25/2011	11/15/2011	



1211362 UA BLUR TANK

\$24.99 // SM-XXXL // BODY: 90% POLYESTER, 10% ELASTANE; INSERTS: 92% POLYESTER, 8% ELASTANE

Fitted silhouette / Stretch jersey knit fabric with all over mesh back and sleeves for increased ventilation / Media/utility pocket on left hip

BODY/LOGO	FIRST SHIP	LAST SHIP	AR
001 BLACK/SILVER	C/O	5/15/2012	
100 WHITE/SILVER	C/O	5/15/2012	
410 MIDNIGHT NAVY/ SILVER	C/O	5/15/2012	
600 RED/SILVER	C/O	5/15/2012	
400 ROYAL/SILVER	C/O	5/15/2012	
301 FOREST GREEN/SILVER	6/25/2011	5/15/2012	
609 MAROON/SILVER	6/25/2011	5/15/2012	
750 STEELTOWN GOLD/SILVER	6/25/2011	5/15/2012	
500 PURPLE/SILVER	6/25/2011	5/15/2012	
475 CAROLINA BLUE/SILVER	6/25/2011	5/15/2012	
860 DARK ORANGE/SILVER	6/25/2011	5/15/2012	
710 VEGAS GOLD/SILVER	6/25/2011	5/15/2012	



UA DOMINATE REVERSIBLE TOP

1219913 ADULT: \$24.99 // SM-XXXL

1219924 YOUTH: \$19.99 // YXS-YXL

3.1 oz. 100% POLYESTER MICRO-FIBER MESH

Double-layered, soft hand HeatGear® micro mesh keeps players cool and dry / Reversible tank with contrast color side A, and contrast color side B / UA UGOP jock tag on lower hem of side A, and HeatGear® locker tag on side B

M	Y	BODY/INSET/LOGO	FIRST SHIP	LAST SHIP	AR
✓	✓	001 BLACK/WHITE/BLACK	C/O	5/15/2012	
✓	✓	410 MIDNIGHT NAVY/WHITE/MDN	C/O	5/15/2012	
✓	✓	601 RED/WHITE/RED	C/O	5/15/2012	
✓	✓	600 RED/WHITE/RED	C/O	5/15/2012	
✓	✓	400 ROYAL/WHITE/ROYAL	C/O	5/15/2012	
✓	✓	301 FOREST GREEN/WHITE/FGR	C/O	5/15/2012	
✓	✓	609 MAROON/WHITE/MAROON	C/O	5/15/2012	
✓	✓	500 PURPLE/WHITE/PURPLE	C/O	5/15/2012	

UA DOMINATE 10" SHORT

1219914 ADULT: \$24.99 // SM-XXXL

1219925 YOUTH: \$19.99 // YXS-YXL

3.1 oz. 100% POLYESTER MICRO-FIBER MESH

Double-layered, soft hand HeatGear® micro mesh keeps players cool and dry / 10" inseam with generous full cut / Performance vent at lower hem for lateral movement

M	Y	BODY/LOGO	FIRST SHIP	LAST SHIP	AR
✓	✓	001 BLACK/WHITE	C/O	5/15/2012	
✓	✓	410 MIDNIGHT NAVY/WHITE	C/O	5/15/2012	
✓	✓	600 RED/WHITE	C/O	5/15/2012	
✓	✓	400 ROYAL/WHITE	C/O	5/15/2012	
✓	✓	301 FOREST GREEN/WHITE	C/O	5/15/2012	
✓	✓	609 MAROON/WHITE	C/O	5/15/2012	
✓	✓	500 PURPLE/WHITE	C/O	5/15/2012	



1207505 UA 10" PRACTICE SHORT

\$29.99 // SM-XXXL // 100% POLYESTER MICRO-MESH

Side seam pockets / Soft hand double layered micro-mesh fabric with superior moisture transport and ventilation / Adjustable draw cord and 2.5" elastic waistband

BODY/INSET/LOGO	FIRST SHIP	LAST SHIP	AR
001 BLACK/WHITE/BLACK/WHITE	C/O		
410 MIDNIGHT NAVY/WHITE/MDN/WHT	C/O		
600 RED/WHITE/RED/WHITE	C/O		
400 ROYAL/WHITE/ROYAL/WHITE	C/O		
040 GRAPHITE/WHITE/GRAPHITE/WHITE	C/O		



1211228 UA 10" PHENOM SHORT

\$24.99 // SM-XXXL // 5.47 oz. POLYESTER MICRO DAZZLE

Side seam pockets / Performance vent at knee for better lateral movement / Adjustable draw cord and 2.5" elastic waistband

BODY/INSET/LOGO	FIRST SHIP	LAST SHIP	AR
001 BLACK/BLACK/BLACK/WHITE	C/O	5/15/2012	
100 WHITE/WHITE/WHITE/BLACK	C/O	5/15/2012	
410 MIDNIGHT NAVY/MDN/WHITE	C/O	5/15/2012	
600 RED/RED/WHITE	C/O	5/15/2012	
400 ROYAL/ROYAL/WHITE	C/O	5/15/2012	
609 MAROON/MAROON/WHITE	C/O	5/15/2012	
040 GRAPHITE/GRAPHITE/WHITE	C/O	5/15/2012	
750 STEELTOWN GOLD/STG/WHITE	C/O	5/15/2012	



MEN'S AND YOUTH STOCK UNDENIABLE REVERSIBLE JERSEY

- Solid body with 4-way stretch pin dot mesh
- 4" contrasting side inserts with stripe across middle of inserts
- Contrasting shoulder insert that extends across top in the back
- Top stitched for additional strength and appearance
- Jersey has bar tac at bottom to allow for decoration on both sides

STYLE	SIZE	PRICE
UKJ115M MEN'S	S-XXL	\$36.00
	XXXL	\$40.00
UKJ115Y YOUTH	S-XL	\$32.00

MEN'S AND YOUTH STOCK UNDENIABLE REVERSIBLE SHORT

- Solid body with 4-way stretch pin dot mesh
- 4" contrasting side inserts with stripe across middle of inserts
- Top stitched for additional strength and appearance
- 11" inseam on sizes M - XXXL
- 10" inseam on size S
- Short has bar tac at bottom to allow for decoration on both sides

STYLE	SIZE	PRICE
UKS515M MEN'S	S-XXL	\$36.00
	XXXL	\$40.00
UKS515Y YOUTH	S-XL	\$32.00

COLOR OPTIONS - STOCK UNIFORM ONLY





MEN'S AND YOUTH STOCK AUBURN BASKETBALL JERSEY

- Solid color tank body with nylon mock mesh front and back
- Contrast 2nd color curved stretch DAZZLE side inserts that slightly taper from bottom to point under armholes
- Contrast 2nd color mock mesh armholes and slightly curved mitered v-neck trim
- Entire jersey is cover seamed or top stitched for additional strength and appearance

STYLE	SIZE	PRICE
UKJ100M MEN'S	S-XXL	\$60.00
	XXXL	\$65.00
UKJ100Y YOUTH	S-XL	\$50.00

MEN'S AND YOUTH STOCK AUBURN BASKETBALL SHORT

- Solid color body with nylon mock mesh front and multiple insert back
- Contrast color side and rear "dynamic shaped" stretch DAZZLE inserts on both sides
- High end UA branded 2" exposed elastic waistband with two rows of UA Grippy to keep jersey tucked in tight - four needle sewn with flat lace drawcord
- 10" standard inseam
- Entire short is cover seamed or top stitched for additional strength and appearance

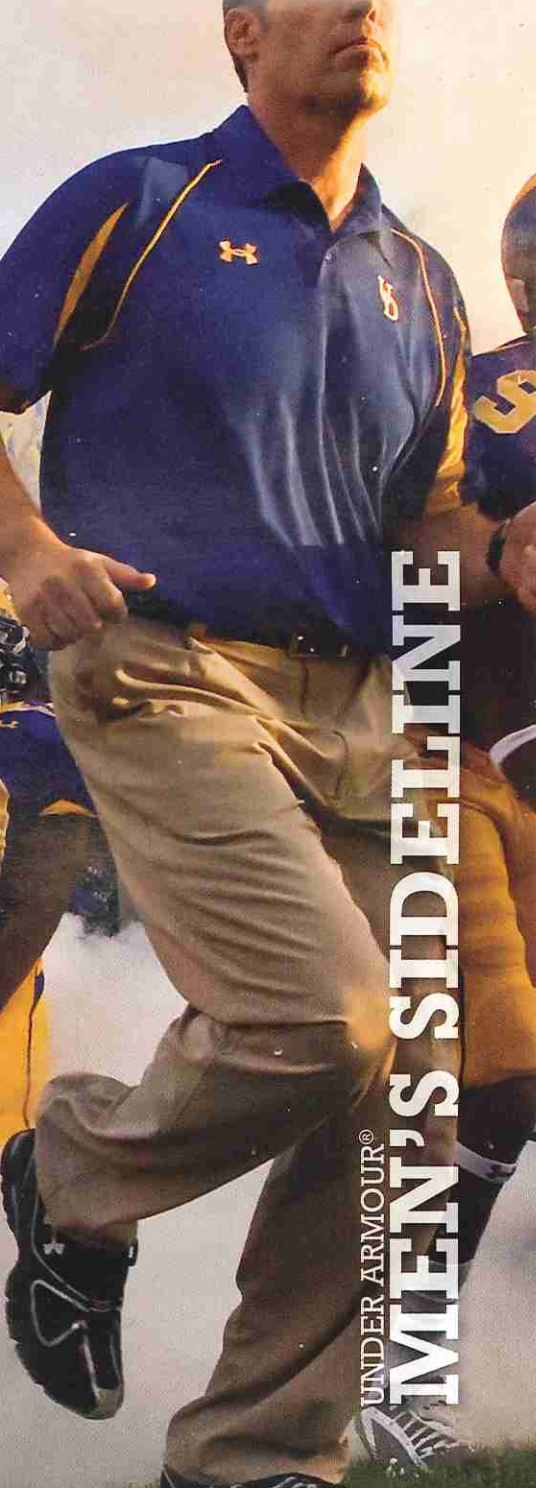
STYLE	SIZE	PRICE
UKS500M MEN'S	S-XXL	\$80.00
	XXXL	\$85.00
UKS500Y YOUTH	S-XL	\$70.00

COLOR OPTIONS - STOCK UNIFORM ONLY



(PLEASE CONTACT ALLESON ATHLETIC, OFFICIAL LICENSEE OF UNDER ARMOUR PERFORMANCE, FOR ORDERING AND CUSTOMER SERVICE: 1-800-594-9082)

DECORATION OPTIONS AND ORDERING INFORMATION ARE AVAILABLE ON PAGES 93-96.



UNDER ARMOUR®
MEN'S SIDELINE

heatgear®

LOOSE



NEW 1222410 SIGNATURE ON-FIELD POLO

\$64.99 // SM-4XL (4XL: 20% UPCHARGE) // 95% POLYESTER, 5% ELASTANE

Signature sideline polo / Closed hole mesh ventilation / Anti-odor technology

BODY/LOGO	FIRST SHIP	LAST SHIP	AR
102 WHITE/BLACK/BLACK	6/25/2011	5/15/2013	
001 BLACK/WHITE/WHITE	6/25/2011	5/15/2013	
092 BLACK/STEELTOWN GOLD/SGD	6/25/2011	5/15/2013	
003 BLACK/RED/RED	6/25/2011	5/15/2013	
004 BLACK/ORANGE/ORANGE	6/25/2011	5/15/2013	
410 MIDNIGHT NAVY/WHITE/WHITE	6/25/2011	5/15/2013	
412 MIDNIGHT NAVY/SGD/SGD	6/25/2011	5/15/2013	
600 RED/WHITE/WHITE	6/25/2011	5/15/2013	
400 ROYAL/WHITE/WHITE	6/25/2011	5/15/2013	
402 ROYAL/STEELTOWN GOLD/SGD	6/25/2011	5/15/2013	
301 FOREST GREEN/WHITE/WHITE	6/25/2011	5/15/2013	
609 MAROON/WHITE/WHITE	6/25/2011	5/15/2013	
500 PURPLE/WHITE/WHITE	6/25/2011	5/15/2013	
625 CARDINAL/WHITE/WHITE	6/25/2011	5/15/2013	

heatgear®

LOOSE



NEW 1222130 TEAM UA FULL BUTTON WOVEN SHIRT

\$64.99 // SM-XXXL // 100% POLYESTER

Lightweight stretch woven body / Breathable mesh inserts / Left sleeve logo placement and clean design makes this a versatile piece for the sideline, office, or on the road

BODY/INSET/LOGO	FIRST SHIP	LAST SHIP	AR
100 WHITE/WHITE/GRAPHITE	6/25/2011		
001 BLACK/BLACK/GRAPHITE	6/25/2011		
410 MDN NAVY/MDN NAVY/GRAPHITE	6/25/2011		
040 GRAPHITE/STEEL/STEEL	6/25/2011		

heatgear®

LOOSE



1211419 ADVANTAGE POLO

\$64.99 // SM-4XL (4XL: 20% UPCHARGE) // 95% POLYESTER, 5% ELASTANE

Closed hole mesh ventilation / UPF / Anti-odor technology

BODY/LOGO	FIRST SHIP	LAST SHIP	AR
100 WHITE/BLACK/BLACK	C/O	5/15/2011	
001 BLACK/WHITE/WHITE	C/O	5/15/2011	
410 MIDNIGHT NAVY/WHITE/WHITE	C/O	5/15/2011	
600 RED/WHITE/WHITE	C/O	5/15/2011	
400 ROYAL/WHITE/WHITE	C/O	5/15/2011	
301 FOREST GREEN/WHITE/WHITE	C/O	5/15/2011	
609 MAROON/WHITE/WHITE	C/O	5/15/2011	
500 PURPLE/WHITE/WHITE	C/O	5/15/2011	

heatgear®

LOOSE



1217748 TEAM UA CATALYST POLO

\$49.99 // SM-4XL (4XL: 20% UPCHARGE) // 100% RECYCLED POLYESTER

Lightweight striped knit / 100% recycled polyester / UPF / Anti-odor technology

BODY/LOGO	FIRST SHIP	LAST SHIP	AR
100 WHITE/STEEL/BLACK	12/25/2010	5/15/2013	
001 BLACK/STEEL/WHITE	12/25/2010	5/15/2013	
410 MIDNIGHT NAVY/STEEL/WHITE	12/25/2010	5/15/2013	
600 RED/STEEL/WHITE	12/25/2010	5/15/2013	
400 ROYAL/STEEL/WHITE	12/25/2010	5/15/2013	
301 FOREST GREEN/STEEL/WHITE	12/25/2010	5/15/2013	
609 MAROON/STEEL/WHITE	12/25/2010	5/15/2013	



NEW 1222133 TEAM PIQUE POLO

\$49.99 // SM-XXXL // 100% POLYESTER

Lightweight performance pique HeatGear® / Anti-pick finish for durability / UPF 30+ sun protection / Rib knit collar and sleeve

BODY/LOGO	FIRST SHIP	LAST SHIP	AR
100 WHITE/BLACK	6/25/2011	11/15/2012	
001 BLACK/WHITE	6/25/2011	11/15/2012	
410 MIDNIGHT NAVY/WHITE	6/25/2011	11/15/2012	
600 RED/WHITE	6/25/2011	11/15/2012	
400 ROYAL/WHITE	6/25/2011	11/15/2012	
301 FOREST GREEN/WHITE	6/25/2011	11/15/2012	
609 MAROON/WHITE	6/25/2011	11/15/2012	
500 PURPLE/WHITE	6/25/2011	11/15/2012	
475 CAROLINA BLUE/WHITE	6/25/2011	11/15/2012	



1211428 CLUTCH POLO

\$44.99 // SM-XXXL // 100% POLYESTER

Lightweight pique fabrication / Colorblocked team styling / Ribbed collar / Anti-odor technology

BODY/LOGO	FIRST SHIP	LAST SHIP	AR
100 WHITE/BLACK	C/O		
001 BLACK/WHITE	C/O		
101 WHITE/MIDNIGHT NAVY	C/O		
410 MIDNIGHT NAVY/WHITE	C/O		
103 WHITE/RED	C/O		
600 RED/WHITE	C/O		
102 WHITE/ROYAL	C/O		
400 ROYAL/WHITE	C/O		
105 WHITE/FOREST GREEN	C/O		
301 FOREST GREEN/WHITE	C/O		
104 WHITE/MAROON	C/O		
609 MAROON/WHITE	C/O		
106 WHITE/PURPLE	C/O		
500 PURPLE/WHITE	C/O		
625 CARDINAL/WHITE	12/25/2010		



1000492 UA PERFORMANCE TEAM POLO

\$44.99 // SM-XXXL (*4XL: 20% UPCHARGE) // 95% POLYESTER, 5% ELASTANE

The essential team polo / Luxurious hand and great stretch / Generous loose fit / Anti-odor technology

BODY/LOGO	FIRST SHIP	LAST SHIP	AR
100 WHITE/BLACK	C/O		
001 BLACK/WHITE	C/O		
410 MIDNIGHT NAVY/WHITE	C/O		
600 RED/WHITE	C/O		
400 ROYAL/WHITE	C/O		
609 MAROON/WHITE	C/O		
750 STEELTOWN GOLD/BLACK	C/O		
500 PURPLE/WHITE	C/O		
710 VEGAS GOLD/BLACK	C/O		
630 CRIMSON/WHITE	C/O		
860 DARK ORANGE/WHITE	C/O		
050 CEMENT/WHITE	C/O		
200 CLEVELAND BROWN/WHITE	C/O		
475 CAROLINA BLUE/WHITE	C/O		
625 CARDINAL/WHITE	C/O		
306 TEAM KELLY GREEN/WHITE	C/O		
695 TRUE PINK/WHITE	C/O		

306/Team Kelly Green and 695/True Pink not shown.



1000455 UA L/S PERFORMANCE TEAM POLO

\$49.99 // SM-XXXL // 95% POLYESTER, 5% ELASTANE

The essential team polo / Luxurious hand and great stretch / Generous loose fit / Anti-odor technology

BODY/LOGO	FIRST SHIP	LAST SHIP	AR
100 WHITE/BLACK	C/O		
001 BLACK/WHITE	C/O		
410 MIDNIGHT NAVY/WHITE	C/O		
600 RED/WHITE	C/O		
400 ROYAL/WHITE	C/O		
301 FOREST GREEN/WHITE	C/O		
609 MAROON/WHITE	C/O		

heatgear

LOOSE



1211434 SIDELINE CARGO SHORT

\$54.99 // 32-42 (44-50: 20% UPCHARGE) // 100% POLYESTER

Lightweight rip stop fabrication / Side hand pockets, side cargo pockets and back pockets provide multiple storage solutions

BODY/LOGO	FIRST SHIP	LAST SHIP	AR
001 BLACK/BLACK	C/O	5/15/2013	
280 SANDSTORM/BLACK	C/O	5/15/2013	

1201021 UA HERITAGE SHORT

\$49.99 // 32-42 (44-50: 20% UPCHARGE) // 100% POLYESTER

Single pleat short / Stretch twill fabrication / Two side pockets and two rear besom pockets

BODY/LOGO	FIRST SHIP	LAST SHIP	AR
002 BLACK/BLACK	C/O		
280 SANDSTORM/SANDSTORM	C/O		
262 DUNE/DUNE	C/O		



1201219 STAFF SHORT

\$34.99 // SM-4XL (4XL: 20% UPCHARGE) // 100% POLYESTER

Durable stretch knit / Side pockets and back buttoned pocket

BODY/INSET/LOGO	FIRST SHIP	LAST SHIP	AR
001 BLACK/BLACK/WHITE	C/O		
410 MIDNIGHT NAVY/MON/WHITE	C/O		
600 RED/RED/WHITE	C/O		
400 ROYAL/ROYAL/WHITE	C/O		
040 GRAPHITE/GRAPHITE/BLACK	C/O		
301 FOREST GREEN/FGR/WHITE	C/O		
609 MAROON/MAROON/WHITE	C/O		



1000450 UA COACH'S SHORT

\$34.99 // SM-4XL (4XL: 20% UPCHARGE) // 100% POLYESTER MICRO INTERLOCK; MESH: 100% POLYESTER MICROFIBER VENTILATION GRID

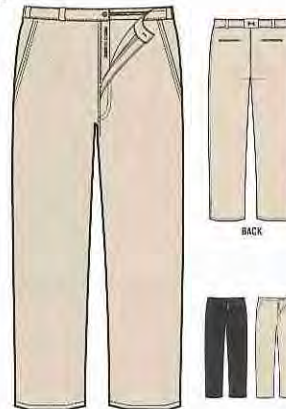
Durable knit fabrication / Ventilated gussets allow breathability and temperature regulation / Side pockets and back buttoned pocket

BODY/LOGO	FIRST SHIP	LAST SHIP	AR
001 BLACK/WHITE	C/O		
410 MIDNIGHT NAVY/WHITE	C/O		
600 RED/WHITE	C/O		
400 ROYAL/WHITE	C/O		
301 FOREST GREEN/WHITE	C/O		
609 MAROON/WHITE	C/O		
020 GRAY/WHITE	C/O		
280 SANDSTORM/BLACK	C/O		



coldgear

LOOSE



1222137 TEAM SIDELINE PANT

\$64.99 // 32-42 (44-50: 20% UPCHARGE) // 100% POLYESTER

Extended sizing and unhemmed bottoms allow you to tailor this pant to a perfect fit

BODY/LOGO	FIRST SHIP	LAST SHIP	AR
001 BLACK/SANDSTORM	6/25/2011	11/15/2012	
280 SANDSTORM/BLACK	6/25/2011	11/15/2012	

allseasongear

LOOSE



1100516 TEAM PLEATED PANT

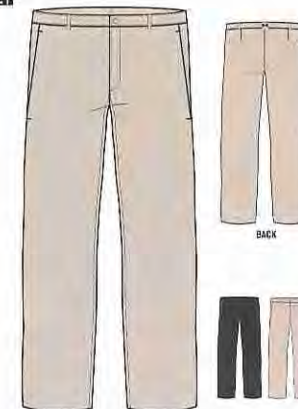
\$64.99 // 32-42 (44-50: 20% UPCHARGE) // 100% POLYESTER

Extended sizing and un-hemmed bottoms allow you to tailor this pant to a perfect fit / Side pockets and back button closure pockets

BODY/LOGO	FIRST SHIP	LAST SHIP	AR
280 SANDSTORM/SANDSTORM	C/O	5/15/2012	

coldgear

LOOSE



1225450 COLDGEAR® TEAM PANT

\$84.99 // 32-42 (44-50: 20% UPCHARGE) // 100% POLYESTER

ColdGear® fabrication with extended sizing and unhemmed bottoms allow you to tailor this pant to a perfect fit

BODY/LOGO	FIRST SHIP	LAST SHIP	AR
001 BLACK/BLACK	6/25/2011	5/15/2012	
280 SANDSTORM/BLACK	6/25/2011	5/15/2012	



UA SCOUT 1/4 ZIP PULLOVER & KNIT PANT

Smooth face fabrication for a clean, athletic look / Soft terry back provides loft and warmth / Raglan sleeves / Side pockets and zippered leg openings

1211496 UA SCOUT 1/4 ZIP PULLOVER

\$49.99 // SM-XXXL // 100% POLYESTER

1211516 UA SCOUT KNIT PANT

\$49.99 // SM-XXXL // 100% POLYESTER

BODY/LOGO	FIRST SHIP	LAST SHIP	AR
001 BLACK/WHITE	C/O	5/15/2013	
410 MIDNIGHT NAVY/WHITE	C/O	5/15/2013	
080 MEDIUM GREY HEATHER/BLACK	C/O	5/15/2013	
600 RED/WHITE	C/O	5/15/2013	
400 ROYAL/WHITE	C/O	5/15/2013	
301 FOREST GREEN/WHITE	C/O	5/15/2013	
609 MAROON/WHITE	C/O	5/15/2013	

Pant only available in 001/Black and 410 Midnight Navy.



TEAM KNIT WARM-UP JACKET & PANT

Lightweight warmth without the bulk and weight of traditional warm-ups / Smooth face with great hand feel and brushed back / Side pockets / Open bottom on pant

1222141 TEAM KNIT WARM-UP JACKET

\$64.99 // SM-XXXL // 90% POLYESTER, 10% ELASTANE

1222142 TEAM KNIT WARM-UP PANT

\$59.99 // SM-XXXL // 90% POLYESTER, 10% ELASTANE

BODY/INSET/LOGO	FIRST SHIP	LAST SHIP	AR
001 BLACK/WHITE/WHITE	6/25/2011	11/15/2013	
410 MIDNIGHT NAVY/WHITE/WHITE	6/25/2011	11/15/2013	
600 RED/WHITE/WHITE	6/25/2011	11/15/2013	
400 ROYAL/WHITE/WHITE	6/25/2011	11/15/2013	
301 FOREST GREEN/WHITE/WHITE	6/25/2011	11/15/2013	
609 MAROON/WHITE/WHITE	6/25/2011	11/15/2013	



UA ADVANCE WOVEN WARM-UP JACKET & PANT

Lightweight & durable warm-ups / Highly water resistant w/ DWR finish / Drop mesh lining / Side pockets / Open bottom on pant

1222183 UA ADVANCE WOVEN WARM-UP JACKET

\$54.99 // SM-XXXL (*XXL: 20% UPCHARGE)

\$65.99 // XLT-XXLT // 100% POLYESTER

1222185 UA ADVANCE WOVEN WARM-UP PANT

\$49.99 // SM-XXXL (*XXL: 20% UPCHARGE)

\$59.99 // XLT-XXLT // 100% POLYESTER

BODY/INSET/LOGO	FIRST SHIP	LAST SHIP	AR
001 BLACK/WHITE/WHITE*	6/25/2011	11/15/2013	
002 BLACK/STEELDOWN GOLD/SGD	6/25/2011	11/15/2013	
003 BLACK/RED/RED	6/25/2011	11/15/2013	
410 MIDNIGHT NAVY/WHITE/WHITE*	6/25/2011	11/15/2013	
411 MIDNIGHT NAVY/SGD/SGD	6/25/2011	11/15/2013	
600 RED/WHITE/WHITE	6/25/2011	11/15/2013	
400 ROYAL/WHITE/WHITE	6/25/2011	11/15/2013	
301 FOREST GREEN/WHITE/WHITE	6/25/2011	11/15/2013	
609 MAROON/WHITE/WHITE	6/25/2011	11/15/2013	
040 GRAPHITE/WHITE/WHITE	6/25/2011	11/15/2013	
500 PURPLE/WHITE/WHITE	6/25/2011	11/15/2013	
625 CARDINAL/WHITE/WHITE	6/25/2011	11/15/2013	

Pant not available in 002, 003, 411, 500 & 625.

LOOSE



1211537 UNDENIABLE 1/4 ZIP JACKET

\$59.99 // SM-XXXL // 100% POLYESTER

- Double weave fabrication
- Durable wind and water resistant outer shell with a soft, insulating lining
- Side zip pockets
- Open hem with drawcord
- Generous fit and great stretch

BODY/INSET/LOGO	FIRST SHIP	LAST SHIP	AR
001 BLACK/WHITE/BLACK/WHITE	C/O	5/15/2013	
410 MIDNIGHT NAVY/WHITE/MDN/WHITE	C/O	5/15/2013	
600 RED/WHITE/RED/WHITE	C/O	5/15/2013	
400 ROYAL/WHITE/ROYAL/WHITE	C/O	5/15/2013	
301 FOREST GREEN/WHITE/FGR/WHITE	C/O	5/15/2013	
609 MAROON/WHITE/MAROON/WHITE	C/O	5/15/2013	

LOOSE



UNDENIABLE WARM-UP JACKET & PANT

Double weave polyester fabric / Durable, wind and water resistant outer shell / Soft insulating lining / Side zip pockets and music solution chest pocket / Zippered leg openings

1204261 UNDENIABLE WARM-UP JACKET

\$64.99 // SM-XXXL (4XL*20% UPCHARGE) // 100% POLYESTER
\$77.99 // XLT-XXLT (STYLE NUMBER: 1221691)

1204269 UNDENIABLE WARM-UP PANT

\$59.99 // SM-XXXL (4XL*20% UPCHARGE) // 100% POLYESTER
\$71.99 // XLT-XXLT (STYLE NUMBER: 1221693)

BODY/INSET/LOGO	FIRST SHIP	LAST SHIP	AR
001 BLACK/WHITE/BLACK/WHITE*	C/O	12/15/2011	
410 MIDNIGHT NAVY/WHITE/MDN/WHT*	C/O	12/15/2011	
600 RED/WHITE/RED/WHITE	C/O	12/15/2011	
400 ROYAL/WHITE/ROYAL/WHITE	C/O	12/15/2011	
301 FOREST GREEN/WHITE/FGR/WHT	C/O	12/15/2011	
609 MAROON/WHITE/MAROON/WHITE	C/O	12/15/2011	

LOOSE



CTG CAGE JACKET & PANT

Durable water resistant, lightweight stretch woven / Generous fit and great stretch for added comfort and mobility / Right chest logo makes this piece ideal for team customization / The ideal jacket and pant to stay warm between innings in the bullpen or for team travel and warm-ups / Bottom zip leg openings

93% POLYESTER, 7% SPANDEX

CTG CAGE JACKET

1212182 ADULT: \$54.99 // SM-XXXL

1212606 YOUTH: \$39.99 // YSM-YXL

1212183 CTG CAGE PANT (adult only)

\$49.99 // SM-XXXL

M	Y	BODY/INSET/LOGO	FIRST SHIP	LAST SHIP	AR
✓	✓	001 BLACK/STEEL/STEEL	6/25/2011		
✓	✓	410 MIDNIGHT NAVY/STEEL/STEEL	6/25/2011		
✓	✓	600 RED/STEEL/STEEL	6/25/2011		
✓	✓	400 ROYAL/STEEL/STEEL	6/25/2011		
✓	✓	301 FOREST GREEN/STEEL/STEEL	6/25/2011		
✓	✓	035 STEEL/BLACK/BLACK	6/25/2011		

Pant not available in 600/Red, 400/Royal, 310/Forest Green or 035/Steel

allseasongear

LOOSE



UA MISSION JACKET & PANT

Durable and water resistant woven shell fabrication / Breathable mesh lining / Zippered side seam pockets / Hidden back seat flap for extra coverage on a rainy day or wet bench / Features zippered leg openings on pant

1211701 UA MISSION JACKET

\$99.99 // SM-XXXL (*4XL: 20% UPCHARGE) // 100% POLYESTER

1211712 UA MISSION PANT

\$89.99 // SM-XXXL (*4XL: 20% UPCHARGE) // 100% POLYESTER

BODY/INSET/LOGO	FIRST SHIP	LAST SHIP	AR
001 BLACK/WHITE/WHITE*	C/D	5/15/2013	
410 MIDNIGHT NAVY/WHITE/WHITE*	C/D	5/15/2013	
600 RED/WHITE/WHITE	C/D	5/15/2013	
400 ROYAL/WHITE/WHITE	C/D	5/15/2013	
301 FOREST GREEN/WHITE/WHITE	C/D	5/15/2013	
609 MAROON/WHITE/WHITE	C/D	5/15/2013	
625 CARDINAL/WHITE/WHITE	C/D	5/15/2013	

allseasongear

LOOSE



NEW UA TEAM BARRAGE JACKET & PANT

ArmourStorm™ technology / Fully taped and waterproof / Underarm venting / Bottom hem cinch / Full time hood / Zip secure hand pockets / Bottom leg zip opening

1225497 UA TEAM BARRAGE JACKET

\$99.99 // XS-4XL (4XL: 20% UPCHARGE) // 100% POLYESTER

1225498 UA TEAM BARRAGE PANT

\$79.99 // XS-4XL (4XL: 20% UPCHARGE) // 100% POLYESTER

BODY/INSET/LOGO	FIRST SHIP	LAST SHIP	AR
001 BLACK/GRAPHITE/WHITE	6/25/2011	5/15/2013	
410 MIDNIGHT NAVY/GRAPHITE/WHITE	6/25/2011	5/15/2013	
012 COAL/GRAPHITE/WHITE	6/25/2011	5/15/2013	

coldgear

LOOSE



NEW STORM JACKET & PANT

Fully seam sealed, waterproof jacket and pant / Embossed tonal graphic / Removable hood / Side zip pockets and internal storage pockets / Hidden napoleon chest pocket allows for custom team embroidery

1222189 STORM JACKET

\$174.99 // XS-4XL (4XL: 20% UPCHARGE) // 100% NYLON

1222191 STORM PANT

\$129.99 // XS-4XL (4XL: 20% UPCHARGE) // 100% NYLON

BODY/INSET/LOGO	FIRST SHIP	LAST SHIP	AR
001 BLACK/STEEL/WHITE	6/25/2011	11/15/2011	
410 MIDNIGHT NAVY/STEEL/WHITE	6/25/2011	11/15/2011	
040 GRAPHITE/STEEL/WHITE	6/25/2011	11/15/2011	

**NEW 1222139 TEAM HUNDO 1/4 ZIP PULLOVER****\$49.99** // SM-XXXL // 100% POLYESTER*Super lightweight double velour microfleece / Raglan construction / Side seam pockets*

BODY/LOGO	FIRST SHIP	LAST SHIP	AR
001 BLACK/WHITE	6/25/2011	11/15/2012	
410 MIDNIGHT NAVY/WHITE	6/25/2011	11/15/2012	
600 RED/WHITE	6/25/2011	11/15/2012	
400 ROYAL/WHITE	6/25/2011	11/15/2012	
040 GRAPHITE/WHITE	6/25/2011	11/15/2012	

**1211733 UA MOTIVE SOFTSHELL JACKET****\$99.99** // SM-XXXL // BONDED SOFTSHELL WOVEN KNIT 100% POLYESTER*Durable wind and water resistant face fabric / Bonded soft fleece internal fabrication / Side pockets*

BODY/INSET/LOGO	FIRST SHIP	LAST SHIP	AR
001 BLACK/WHITE/WHITE	C/O	5/15/2013	
410 MIDNIGHT NAVY/WHITE/WHITE	C/O	5/15/2013	
600 RED/WHITE/WHITE	C/O	5/15/2013	
400 ROYAL/WHITE/WHITE	C/O	5/15/2013	
040 GRAPHITE/WHITE/WHITE	C/O	5/15/2013	

**1211749 UA ELEMENT JACKET****\$149.99** // SM-XXXL // BODY: 100% POLYESTER WOVEN DOBBY; FILL: 200gm, 150gm POLYFILL INSULATION*Wind and water resistant outer shell / 200g body fill insulation, 150g arm fill insulation / Removable hood / Side zip pockets and internal storage pockets / Hidden Napoleon chest pocket allows for custom team embroidery / ColdGear® sleeve gaskets*

BODY/LOGO	FIRST SHIP	LAST SHIP	AR
001 BLACK/WHITE	C/O	5/15/2013	
410 MIDNIGHT NAVY/WHITE	C/O	5/15/2013	
041 GRAPHITE/WHITE	C/O	5/15/2013	