



**2012 NIKE BASEBALL**





**APPAREL**

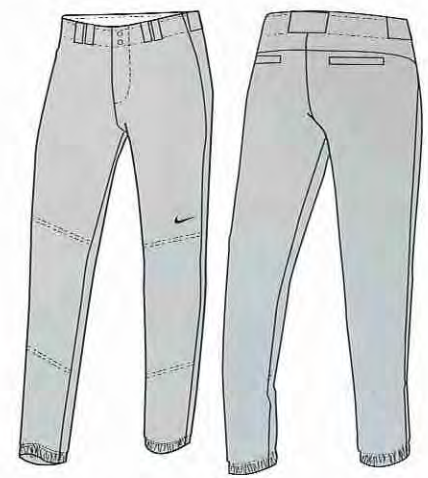


**453371** | **YOUTH INTEGRATED SLIDING PANT** | **W0002** | **\$40.00**

SIZES: XS-XL

052	Tm Blue Grey/Tm Black (not shown)	1/1
100	Tm White/Tm Black	1/1

**NEW**



052

**399209** | **MENS STOCK BP JERSEY** | **W0581** | **\$37.00**

Dri-FIT double knit flat back mesh short sleeve jersey. Two button front placket, self fabric piping on sleeve hem, contrast self fabric under arm. Embroidered Swoosh design trademark on lower left sleeve. Nike team sports jock tag at lower left hem. Body length: 31.5" (size large).

FABRIC: 100% polyester.

SIZES: S-XXXL

012	Tm Black/Tm White/Tm White	c/o
100	Tm White/Tm White/Tm Black (not shown)	c/o
106	Tm White/Tm Black/Tm Black	c/o
107	Tm White/Tm Navy/Tm Navy	c/o
109	Tm White/Tm Scarlet/Tm Scarlet	c/o
342	Tm Dark Green/Tm White/Tm White	c/o
420	Tm Navy/Tm White/Tm White	c/o
494	Tm Royal/Tm White/Tm White	c/o
612	Tm Cardinal/Tm White/Tm White	c/o
658	Tm Scarlet/Tm White/Tm White	c/o

Youth #399210 / S-XL / \$25.00 / Body length: 25" (size Medium).  
15% additional upcharge for 3XL adult sizing.

*DRI-FIT*



012    106    107    109    342    420    494    612    658

**359727** | **ACE MESH HENLEY** | **W0051** | **\$30.00**

Great lightweight all-over fabric allowing for ultimate breathability with contrast set-on white taping on the sleeves and two-button center front placket. Nike team sports jock tag at lower left front hem. Swoosh design trademark on left sleeve hem. Body length: 34" (size large).

FABRIC: 100% polyester.

SIZES: S-XXXL

012	Tm Black/Tm White/Tm White	c/o
100	Tm White/Tm White/Tm Black	c/o
342	Tm Dark Green/Tm White/Tm White	c/o
420	Tm Navy/Tm White/Tm White	c/o
494	Tm Royal/Tm White/Tm White	c/o
546	Tm Purple/Tm White/Tm White	c/o
612	Tm Cardinal/Tm White/Tm White	c/o
658	Tm Scarlet/Tm White/Tm White	c/o

Youth #359912 / S-XL / \$25.00 / Body length: 25" (size Medium).  
15% additional upcharge for 3XL adult sizing.

*DRI-FIT*



012    100    342    420    494    546    612    658

**359915 OREGON ELITE PANT**

W0572 \$55.00

Poly warp-knit baseball pant with reinforced articulation in the knee for durability, two set-in back pockets, brass zipper, metal snaps and an angled belt loop system. Gripper elastic at waistband and leg opening. Contrast side insets. Swoosh design trademark on upper left back pocket. Inseam: 31" (size medium).

FABRIC: 100% polyester.

SIZES: S-XXXL

052	Tm Blue Grey/Tm Blue Grey/Tm Black (not shown)	c/o
053	Tm Blue Grey/Tm Scarlet/Tm Scarlet	c/o
056	Tm Blue Grey/Tm Navy/Tm Navy	c/o
058	Tm Blue Grey/Tm Black/Tm Black	c/o
100	Tm White/Tm White/Tm Black	c/o
106	Tm White/Tm Black/Tm Black	c/o
107	Tm White/Tm Navy/Tm Navy	c/o
109	Tm White/Tm Scarlet/Tm Scarlet	c/o

15% additional upcharge for 3XL adult sizing.



**399211 LIGHTS OUT GAME PANT**

W0002 \$40.00

Poly warp knit baseball pant with reinforced knees for durability, brass zipper, two metal snap closures, two back welt pockets and a seven-belt loop system. Gripper elastic waistband and a 9" bottom hem opening. Embroidered Swoosh design trademark at upper left hip. Inseam: 32" (size large).

FABRIC: 100% polyester.

SIZES: S-XXXL

010	Tm Black/Tm White	c/o
052	Tm Blue Grey/Tm Black	c/o
100	Tm White/Tm Black	c/o
419	Tm Navy/Tm White	c/o

Youth #399212 / S-XL / \$30.00 / Inseam: 25.75" (size Medium).

15% additional upcharge for 3XL adult sizing.



433398

**LIGHTS OUT GAME PANT PIPED**

W0522 \$45.00

Poly warp knit baseball pant with reinforced knees for durability, brass zipper, two metal snap closures, two back welt pockets and a seven-belt loop system. Gripper elastic waistband and a 9" bottom hem opening. Embroidered Swoosh design trademark at upper left hip. Inseam: 32" (size large).

FABRIC: 100% polyester.

SIZES: S-XXXL

<b>053</b>	Tm Blue Grey/Tm Scarlet/Tm Scarlet	<i>c/o</i>
<b>056</b>	Tm Blue Grey/Tm Navy/Tm Navy	<i>c/o</i>
<b>058</b>	Tm Blue Grey/Tm Black/Tm Black	<i>c/o</i>
<b>106</b>	Tm White/Tm Black/Tm Black	<i>c/o</i>
<b>107</b>	Tm White/Tm Navy/Tm Navy	<i>c/o</i>
<b>109</b>	Tm White/Tm Scarlet/Tm Scarlet	<i>c/o</i>

Youth #433397 / S - XL / \$40.00 / Inseam: 25.75" (size Medium).  
15% additional upcharge for 3XL adult sizing.



053                      056                      106                      058                      107                      109

**299414 FULL BUTTON MESH JERSEY ADULT**

W0002 \$40.00

Double-knit full-button jersey with optimized tapered fit. Nike Team Sports jock tag at lower left hem and Swoosh design trademark on left sleeve. Body length: 34" (size large).

FABRIC: 100% polyester.

SIZES: XXS-XXXL

010	Tm Black/Tm White	c/o
100	Tm White/Tm Black	c/o
341	Tm Dark Green/Tm White	c/o
419	Tm Navy/Tm White	c/o
493	Tm Royal/Tm White	c/o
610	Tm Cardinal/Tm White	c/o
657	Tm Scarlet/Tm White	c/o

15% additional upcharge for 3XL adult sizing.



010      100      341      419      493      610      657

**378362 NIKE CORE BASEBALL PANT**

W0521 \$25.00

Poly warp knit baseball pant with reinforced knees for durability, brass zipper, two metal snap closures, two back pockets and performance five-belt loop system. Elastic leg opening and Swoosh design trademark at upper right back hip. Inseam: 29.5" (size large).

FABRIC: 100% polyester.

SIZES: S-XXXL

010	Tm Black/Tm White	c/o
052	Tm Blue Grey/Tm Black	c/o
100	Tm White/Tm Black	c/o

Youth #378363 / S - XL / \$20.00 / Inseam: 22.5" (size Medium).  
15% additional upcharge for 3XL adult sizing.



010      052      100

299423

**STEALTH FASTPITCH JERSEY**

W0002 \$40.00

Lightweight Dri-FIT fabric jersey with mesh insets at side panels and upper back for ventilation. Unique embossed design on both sleeves. Contrast white piping along shoulders and side panels. Contrast white insets at neck. Swoosh design trademark at left sleeve. Body length: 27" (size medium).

FABRIC: 100% polyester.

SIZES: XS-XXL

011	Tm Silver/Tm White/Tm Black	c/o
012	Tm Black/Tm White/Tm White	c/o
100	Tm White/Tm White/Tm Black	c/o
342	Tm Dark Green/Tm White/Tm White	c/o
420	Tm Navy/Tm White/Tm White	c/o
494	Tm Royal/Tm White/Tm White	c/o
612	Tm Cardinal/Tm White/Tm White	c/o
658	Tm Scarlet/Tm White/Tm White	c/o



011 012 100 342 420 494 612 658

299422

**WOMEN'S STEALTH FASTPITCH PANT**

W0522 \$45.00

Fastpitch specific fit with over-the-knee pant length. Gripper at leg opening to lock sock and pant in place for proper fit. Rocked side seam placement for comfort in pitch and slide. Mesh insets at sides for ventilation. Reinforced, double-layer knee for durability. White contrast piping along side seams and back panel. Mesh pockets hidden in back piping seam to reduce bulk and weight. Gripper elastic and drawcord waistband. Swoosh design trademark at upper left hip. Inseam: 18.5" (size medium).

FABRIC: 100% polyester.

SIZES: XS-XXL

012	Tm Black/Tm White/Tm White	c/o
043	Tm Blue Grey/Tm White/Tm Black	c/o
100	Tm White/Tm White/Tm Black	c/o
420	Tm Navy/Tm White/Tm White	c/o
657	Tm Scarlet/Tm White/Tm White	c/o



012 043 100 420 657

**399217** | **WOMEN'S CORE FP 3/4 PANT** | **W0521** | **\$25.00**

Poly warp knit 3/4 length fastpitch pant with reinforced knees for durability, gripper elastic waistband with a drawcord for adjustability, two back welt pockets and gripper elastic at bottom pant hem. Embroidered Swoosh design trademark at upper left hip. Inseam: 18.75" (size medium).

FABRIC: 100% polyester.

SIZES: S-XXL

010	Tm Black/Tm White	c/o
052	Tm Blue Grey/Tm Black	c/o
100	Tm White/Tm Black	c/o
419	Tm Navy/Tm White	c/o
657	Tm Scarlet/Tm White	c/o



010

052

100

419

657

**453383** | **STOCK SOLID 3/4 PANT** | **W0002** | **\$40.00**

Poly warp knit 3/4 length fast pitch pant with reinforced knees for durability and gripper elastic waistband to help keep the athletes jersey in place. Angled belt loop system, two back pockets, zipper front closure with two button snaps. Gripper elastic at bottom pant hem. Embroidered Swoosh design trademark at left hip.

FABRIC: 100% polyester.

SIZES: S-XXL

010	Tm Black/Tm White (not shown)	1/1
052	Tm Blue Grey/Tm Black	1/1
100	Tm White/Tm Black (not shown)	1/1
419	Tm Navy/Tm White (not shown)	1/1
657	Tm Scarlet/Tm White (not shown)	1/1

**NEW**



052

**454097** | **W'S RESPECT S/S JERSEY** | **W0571** | **\$35.00**

Poly spandex short sleeve game jersey with a back mesh panel to allow breathability for the athlete during competition. Side contrast insets and unique piping detail around shoulders and neck provide a clean and fresh look while on the field. Scoop neck design. Embroidered Swoosh design trademark at center front neck.

FABRIC: 92% polyester/8% spandex.

SIZES: XS-XXL

012	Tm Black/Tm White/Tm White	1/1
051	Tm Pewter/Tm White/Tm Black	1/1
100	Tm White/Tm White/Tm Black	1/1
342	Tm Dark Green/Tm White/Tm White	1/1
420	Tm Navy/Tm White/Tm White	1/1
453	Tm Light Blue/Tm White/Tm White	1/1
494	Tm Royal/Tm White/Tm White	1/1
546	Tm Purple/Tm White/Tm White	1/1
612	Tm Cardinal/Tm White/Tm White	1/1
658	Tm Scarlet/Tm White/Tm White	1/1
821	Tm Orange/Tm White/Tm White	1/1

Youth #453394 / XS - XL / \$30.00

**NEW**

IMAGE  
NOT  
AVAILABLE

454095

## W'S RESPECT S/L JERSEY

W0051 \$30.00

Poly spandex sleeveless game jersey with a back mesh panel to allow breathability for the athlete during competition. Side contrast insets and unique piping detail around shoulders and neck provide a clean and fresh look while on the field. Scoop neck design. Embroidered Swoosh design trademark at center front neck.

FABRIC: 92% polyester/8% spandex.

SIZES: 2S/XS, S/M, L/XL, 2/3XL

012	Tm Black/Tm White/Tm White (not shown)	1/1
051	Tm Pewter/Tm White/Tm Black (not shown)	1/1
100	Tm White/Tm White/Tm Black (not shown)	1/1
342	Tm Dark Green/Tm White/Tm White (not shown)	1/1
420	Tm Navy/Tm White/Tm White	1/1
453	Tm Light Blue/Tm White/Tm White (not shown)	1/1
494	Tm Royal/Tm White/Tm White (not shown)	1/1
546	Tm Purple/Tm White/Tm White (not shown)	1/1
612	Tm Cardinal/Tm White/Tm White (not shown)	1/1
658	Tm Scarlet/Tm White/Tm White (not shown)	1/1
821	Tm Orange/Tm White/Tm White (not shown)	1/1

Youth #453395 / XS - XL / \$25.00

NEW



420

454099

## W'S RESPECT SHORT

W0521 \$25.00

Poly spandex game short with a drawcord waistband. Contrast side mesh insets with piping detail. Embroidered Swoosh design trademark at lower left hem. Inseam: 7".

FABRIC: 92% polyester/8% spandex.

SIZES: XS-XXL

012	Tm Black/Tm White/Tm White (not shown)	1/1
051	Tm Pewter/Tm White/Tm Black (not shown)	1/1
100	Tm White/Tm White/Tm Black (not shown)	1/1
342	Tm Dark Green/Tm White/Tm White (not shown)	1/1
420	Tm Navy/Tm White/Tm White	1/1
453	Tm Light Blue/Tm White/Tm White (not shown)	1/1
494	Tm Royal/Tm White/Tm White (not shown)	1/1
546	Tm Purple/Tm White/Tm White (not shown)	1/1
612	Tm Cardinal/Tm White/Tm White (not shown)	1/1
658	Tm Scarlet/Tm White/Tm White (not shown)	1/1
821	Tm Orange/Tm White/Tm White (not shown)	1/1

Youth #453396 / XS - XL / \$20.00

NEW



420

429603

**NIKE PRO COMBAT FITTED SHORT-SLEEVE MLB TOP**

W0051 \$30.00

Fitted design for comfort in a variety of training conditions. Strategically placed flat-seam construction helps reduce irritation caused by chafing. Contrast colored sleeves for a pop of color and interest. Raglan sleeves for great range of motion and enhanced comfort. Nike Pro Combat printed on the back neckband, MLB (Major League Baseball) logo on the upper back, and the Nike Baseball logo on the chest for interesting design details. Jock tag at the front left hem for quick and easy product identification. Short-sleeve construction for a versatile style and an athletic fit.

FABRIC: Sleeve solid Dri-FIT 170g. 84% polyester/16% spandex plain jersey.

SIZES: S-XXL

100	White/Dark Obsidian/White	11/1
102	White/Varsity Royal/White	SS 11/1
103	White/Varsity Red/White	SS 11/1
105	White/Black/White	11/1

**NEW** DRI-FIT



429605

**NIKE PRO COMBAT FITTED LONG-SLEEVE MLB TOP**

W0002 \$40.00

Fitted design for comfort in a variety of training conditions. Strategically-placed, flat-seam construction helps reduce irritation caused by chafing. Contrast colored sleeves for a pop of color and interest. Raglan sleeves for great range of motion and enhanced comfort. Nike Pro Combat printed on the back neckband, MLB (Major League Baseball) logo on the upper back, and the Nike Baseball logo on the chest for interesting design details. Jock tag at the front left hem for quick and easy product identification. Long-sleeve construction for great coverage in cooler conditions.

FABRIC: Sleeve solid Dri-FIT 170g. 84% polyester/16% spandex plain jersey.

SIZES: S-XXL

100	White/Dark Obsidian/White	11/1
102	White/Varsity Royal/White	SS 11/1
103	White/Varsity Red/White	SS 11/1
105	White/Black/White	11/1

**NEW** DRI-FIT



429613

**NIKE PRO COMBAT HYPERSTRONG HEIST SLDR 1.2**

W0521 \$25.00

Nike Pro Combat branding on the waistband for an authentic look. Foam padding on the outside of the legs for increased durability and impact protection when sliding. Strategically placed flat-seam construction helps reduce irritation caused by chafing and seam stacking. Jock tag at the center back waist for quick and easy product identification. Compression fit helps support the muscles and allows the short to layer comfortably under a uniform.

SIZES: S-XXL

010	Black/Flint Grey/Black	11/1
064	Flint Grey/Black/Flint Grey	SS 11/1
100	White/Matte Silver/White	SS 11/1

Youth #436180-010, 064, 100 / S-XXL / W0521 / \$25.00

**NEW** DRI-FIT



**395554 NIKE PRO COMBAT 17" COMPRESSION DIAMOND THIEF SLIDER W0572 \$55.00**

Nike Pro Combat compression short with abrasion resistant fabric on outside legs for increased protection and durability when sliding and structured foam cells in strategic knee impact zones. Strategically placed flat-lock seams and mesh lined cup pocket. Swoosh design trademark at middle left leg. 17" inseam.

FABRIC: Body Dri-FIT 230g. 82% polyester/18% spandex plain jersey. Gusset Dri-FIT 246g. 90% polyester/10% spandex circular knit mesh.

SIZES: S-XXL

010	Black/Flint Grey	c/o
064	Flint Grey/Black	SS c/o
100	White/Cool Grey	c/o

*DRI-FIT*



**395534 BASEBALL CONVERT HOT JACKET W0572 \$55.00**

Lightweight, water-resistant jacket with stretch mesh insets for breathability and mobility for baseball specific movements. Zippered sleeves allow for the ultimate versatility. Two button placket with a heat transfer Swoosh design trademark at upper left chest.

FABRIC: Body 94g. 100% polyester taffeta. Armhole panel 140g. 100% polyester warp knit mesh.

SIZES: S-XXL

010	Black/Flint Grey/Anthracite	SS 11/1
064	Flint Grey/Black/Black	11/1
475	Dark Obsidian/Flint Grey/Anthracite	11/1
493	Varsity Royal/Flint Grey/Anthracite	SS 11/1
648	Varsity Red/Flint Grey/Anthracite	11/1



**443950 THERMA-FIT BASEBALL KO CREW W0052 \$50.00**

The Nike Knockout crew features a Thermo-FIT flat face and brushed back fabrication that keeps the athlete warm during activity. Goalie gusset provides mobility as well as color blocking options. Flat lock coverstitch throughout the garment represents premium craftsmanship. #5 Swoosh design trademark screen print on center chest. Nike trademark repeat neck tape.

FABRIC: Body Thermo-FIT 250g. 100% polyester circular knit.

SIZES: S-XXL

010	Black	SS 11/1
063	Dk Grey Heather	11/1
451	Obsidian	11/1
493	Varsity Royal	11/1
648	Varsity Red	11/1



**NEW** THERMA-FIT

458020

**NIKE ELITE TRAINING SHORT 3.0**

W0571 | \$35.00

Dri-FIT fabric wicks away sweat to help keep you comfortable and dry. Mesh side panels, gusset and back yoke for increased ventilation. Lightweight construction is ideal for training activities. Repeat Nike trademark font on inside of elastic waistband gives this short a bold new look. Internal drawcords double turned and bar tacked for extra durability.

FABRIC: Body Dri-FIT 180g. 100% polyester circular knit interlock.

SIZES: S-XL, 2XL

<b>010</b>	Black/Varsity Red	11/1
<b>451</b>	Obsidian/Black	11/1
<b>493</b>	Varsity Royal/Black	11/1
<b>648</b>	Varsity Red/Black	11/1

**NEW** DRI-FIT



443128 **BASEBALL DOMINATE THE DIAMOND DRI-FIT COTTON** W0521 \$25.00

Short-sleeve silhouette for versatility and an athletic fit and feel. Unique graphic screen printed on the chest for a great look. Elastic neck tape with a repeat Nike trademark pattern for durability and detail. Available in a variety of colors to pair with all of your favorite shorts and shoes.

FABRIC: Body Dri-FIT 150g, 58% cotton (10% organic)/42% polyester plated jersey, Rib 250g, 100% cotton (10% organic).

SIZES: XS-XXXXL, MT-XLT, XXLT, XXXLT

010	Black/Dk Grey Heather/Varsity Red	11/1
063	Dk Grey Heather/Dk Grey Heather/Black	11/1
100	White/Dk Grey Heather/Pine Green	11/1
451	Obsidian/Dk Grey Heather/Team Orange	11/1
493	Varsity Royal/Dk Grey Heather/Dark Obsidian	SS 11/1
648	Varsity Red/Dk Grey Heather/Black	SS 11/1

**NEW** DRI-FIT



010 063 100 451 493 648

443126 **BASEBALL STAMP TEE** W059 \$20.00

Short-sleeve cotton tee with high-density screen print front chest graphic.

FABRIC: Body 180g, 100% cotton (10% organic) plain jersey, Rib 250g, 100% cotton (10% organic).

SIZES: S-XXL

010	Black/Dk Grey Heather	SS 11/1
100	White/Dk Grey Heather	11/1
475	Dark Obsidian/Dk Grey Heather	11/1
493	Varsity Royal/Dk Grey Heather	SS 11/1
648	Varsity Red/Dk Grey Heather	11/1

**NEW**



010 100 475 493 648

443127 **BASEBALL SCRIPT TEE** W059 \$20.00

Short-sleeve cotton tee with high-density screen print front chest graphic.

FABRIC: Body 180g, 100% cotton (10% organic) plain jersey, Rib 250g, 100% cotton (10% organic).

SIZES: XS-XXXXL, MT-XLT, XXLT, XXXLT

010	Black/Dk Grey Heather/Varsity Red	SS 11/1
063	Dk Grey Heather/Dk Grey Heather/Black	SS 11/1
100	White/Dk Grey Heather/Varsity Royal	11/1
475	Dark Obsidian/Dk Grey Heather/Neutral Grey	11/1
493	Varsity Royal/Dk Grey Heather/White	11/1
648	Varsity Red/Dk Grey Heather/Black	11/1

**NEW**



010 063 100 475 493 648